



**armour**



low carbon carpet tiles

**Burmatex<sup>®</sup>**

MANUFACTURERS OF CREATIVE FLOORING 

# armour

## performance barrier system carpet tiles made in the UK

**armour** is engineered using our three-stage advanced sustainable yarn protection system, made with 100% regenerated recyclable yarns, to deliver superior entrance performance.

Moisture-absorption fibres draw water from footwear, preventing it from being tracked into interior spaces, while precision-designed scraper yarn actively removes grit and debris at the building entrance. Finally, its high-denier yarn structure provides exceptional durability and wear resistance for long-term performance.

Made from 100% **Econyl® regenerated** solution dyed nylon yarn and our unique **BioBase® recycled** backing, **armour** is **low carbon**.



### protects

**armour** prevents the moisture and dirt entering the building which helps prolong the life of interior floor surfaces



### reduces slips

**armour** reduces the risks of slips, one of the most common types of accident to members of the public by removing excess dirt and moisture



### easy to maintain

**armour** traps dirt and debris making footwear and wheel traffic cleaner. Interior floor surfaces will require less cleaning and maintenance reducing over all costs

**eco<sub>2</sub>matters®**

We are committed to achieving Net Zero through the continual removal of carbon from our products and processes. We believe that what we do matters, that the ecology of our planet matters, and that **eco<sub>2</sub>matters®**

To find out more visit [www.burmatex.co.uk/eco2matters/](http://www.burmatex.co.uk/eco2matters/)

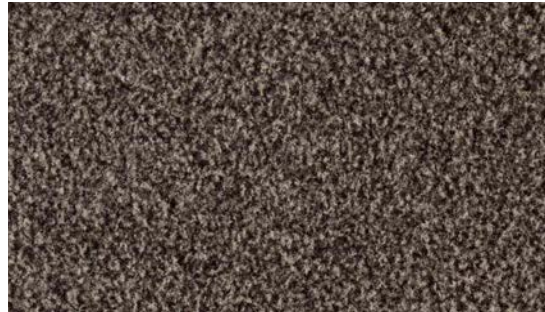


# colour palette

armour has 12 colour options



36301 titanium ore LRV: Y 9.98



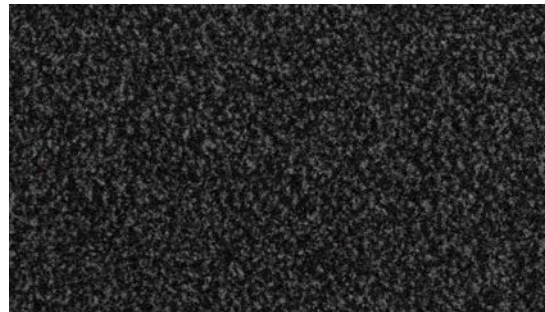
36306 leaden grey LRV: Y 7.87



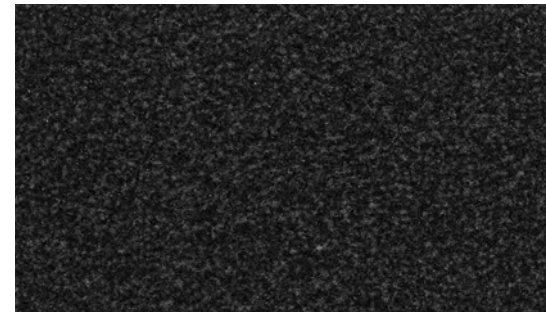
36302 silver nickel LRV: Y 6.00



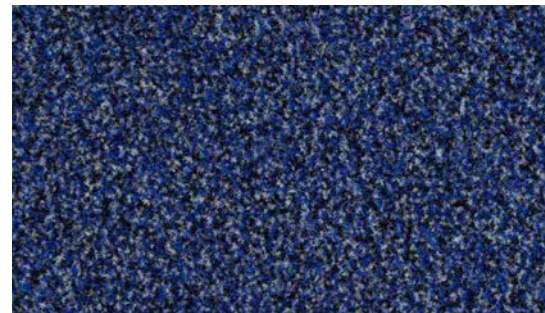
36307 tungsten stone LRV: Y 4.55



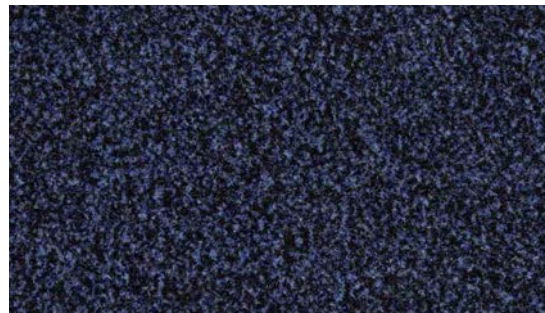
36303 black magnet LRV: Y 3.57



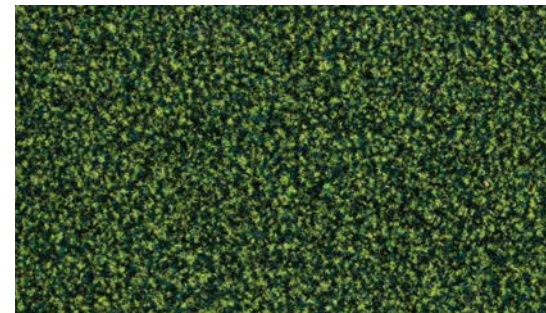
36304 onyx shield LRV: 1.89



36309 saltwater blue LRV: Y 8.01



36310 coastline azure LRV: Y 2.85



36312 cactus thorn LRV: Y 6.52



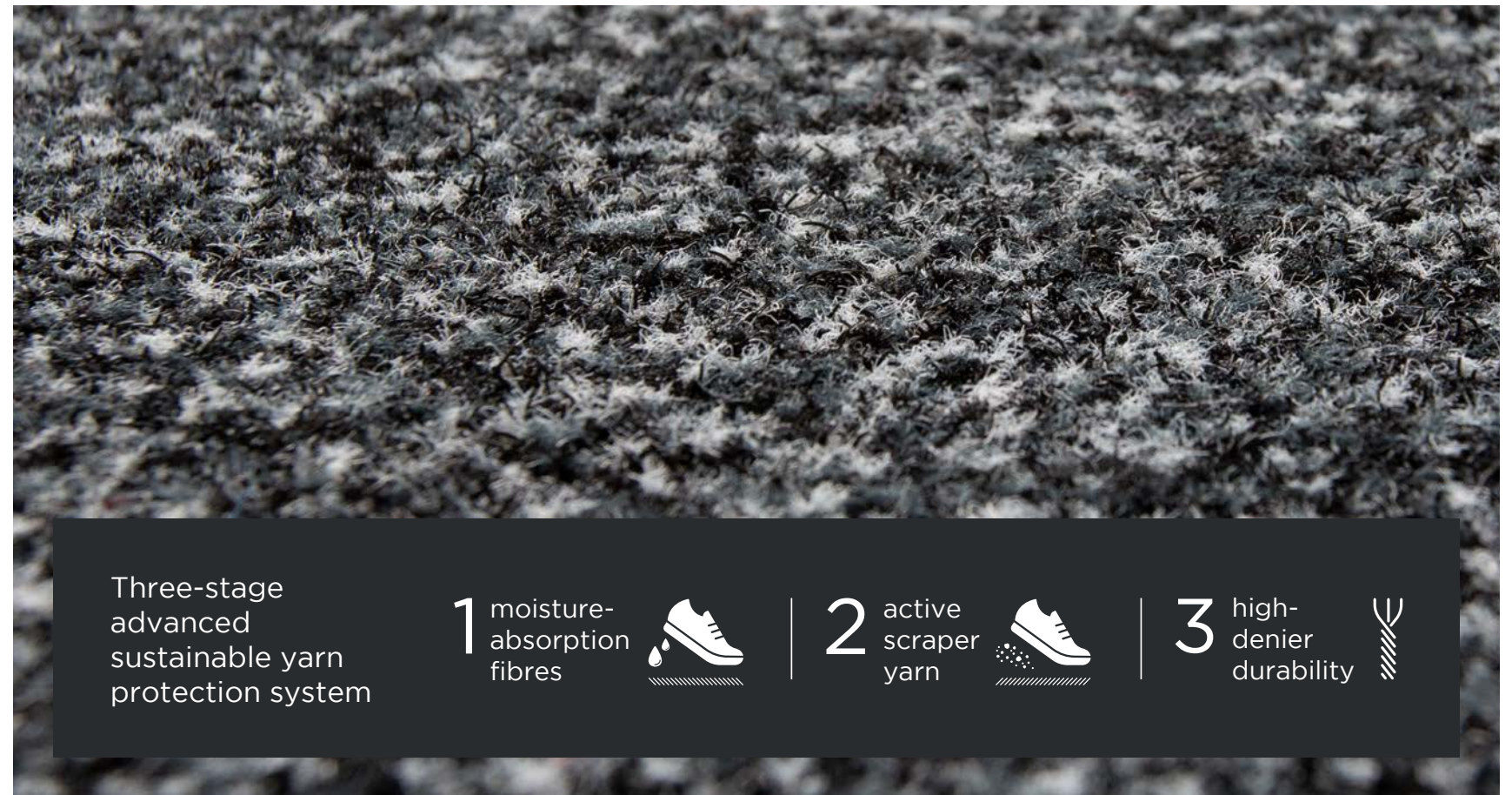
36305 bamboo wood LRV: Y 12.87




36308 burnt terracotta LRV: Y 5.67





36311 ruby ground LRV: Y 2.59

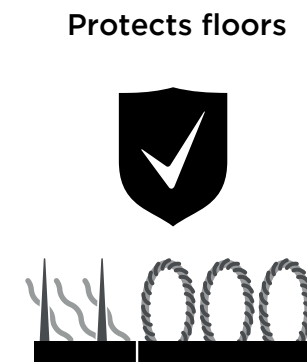
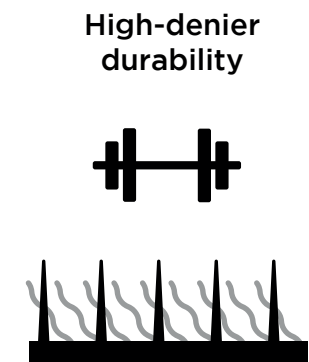
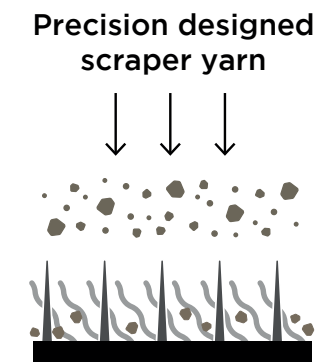
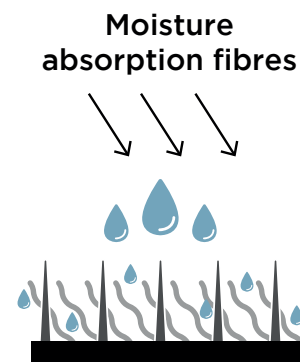


Three-stage advanced sustainable yarn protection system

1 moisture-absorption fibres 

2 active scraper yarn 

3 high-denier durability 



<p><b>Moisture absorption fibres</b></p> <p>remove water from footwear, preventing it entering interior spaces</p>	<p><b>Precision designed scraper yarn</b></p> <p>actively remove and trap dirt and debris from foot and wheeled traffic at the entrance</p>	<p><b>Higher-denier durability</b></p> <p>yarn structure provide exceptional durability and wear resistance for long-term performance</p>	<p><b>Protects floors</b></p> <p>your interior floor surfaces stay looking newer for longer</p>	<p><b>Easy to maintain</b></p> <p>dirt and debris are trapped making it easier to remove through vacuuming</p>
--	---	---	---	--



## eco<sub>2</sub>matters<sup>®</sup>

Carbon Status:

 low carbon

---

Yarn Description:

 100% Econyl<sup>®</sup>  
regenerated recyclable

---

Backing:

 **BioBase<sup>®</sup>**  
\* Recycled content BS EN ISO 14021

---

Global Warming Potential / kg CO<sub>2</sub> eq:

 independently  
3rd party verified **4.01**

---

## armour

Total Recycled Content of Product:

**75.4%**  
BS EN ISO 14021

---

Installation Waste:

**3-4%**  
\* Based on average installation

---

Wear Classification:

**Class 33**  
heavy commercial use (BS EN 1307)

---

Warranty:

**15 years**

---

Technical Features:

 protects

---

Technical Features:

 reduces slips

---

Technical Features:

 easy to maintain

---

Colour Palette:

**12 options**

---

# technical specification

<b>Yarn</b>	100% <b>Econyl® regenerated recyclable</b> solution dyed nylon, featuring advanced moisture-absorption fibres with active scraper yarn technology
<b>Tile / plank dimensions</b>	50cm x 50cm
<b>Pile Weight</b>	920g/m <sup>2</sup>
<b>Total Weight</b>	4500g/m <sup>2</sup>
<b>Total Thickness</b>	10.0mm
<b>Backing</b>	<b>BioBase® recycled</b> backing (recycled BS EN ISO 14021)
<b>Wear Classification</b>	Class 33 heavy commercial use (BS EN 1307)
<b>Castor Chair Rating</b>	Pass - continuous use (BS EN 985)
<b>Flammability</b>	Euroclass Bfl-s1
<b>Static Loading</b>	BS 4939: 1987 (2003) Recovery >80% (24hrs)
<b>Reduction in Impact Noise</b>	BS EN ISO 10140-3:2010 26dB
<b>Warranty</b>	15 years
<b>Tiles per Box</b>	16 (4m <sup>2</sup> )

## Environmental Product Declarations



Independent product specific EPD of full life cycle A1 - D



**EN**  
EPDs and independent third party verification are an integral part of our sustainability principles.

## Low Carbon BioBase® recycled backing



Recycled Content

**77%**  
\*minimum content

**EN**  
**BioBase®** is our low carbon backing system, made using locally sourced recycled organic materials. Combined with 100% organic, non-vinyl polymer binders and fillers.

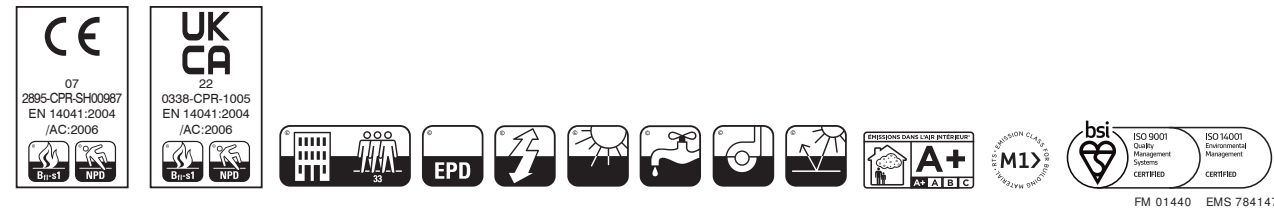
## Recovery Take Back Service



Total Landfill Waste

**0%**

**EN**  
Working with our partners, we work to find your used carpet tiles a new home, such as helping local community organisations requiring low cost flooring.



**Installation Method:**

carpet tiles



monolithic



quarter turn

## Adhesive Free Installation to Facilitate Flooring Reuse

### Burmatex® achieves circular installation with IOBAC



arctic® on standard floor with IOBAC Tab-It®



arctic® on raised access floor with IOBAC MagTabs®

Adhesive free installation with IOBAC allows carpet tiles to be held securely in place, yet are uplifted cleanly and damage-free, enabling easier reuse and recycling.

## Design for Deconstruction

### To enable future reuse, repurposing, or recycling

The Construction industry is currently in transition from a linear path to a circular economy, but this process is still at an early stage. Design Deconstruction plays a vital role in a buildings' circularity and a considered approach in selective dismantlement of building components for provision of its future reuse, repurposing or indeed recycling, is imperative in this change.



IOBAC enables carpet tiles to be uplifted cleanly and damage-free, enabling easier reuse and recycling.

## Burmatex®

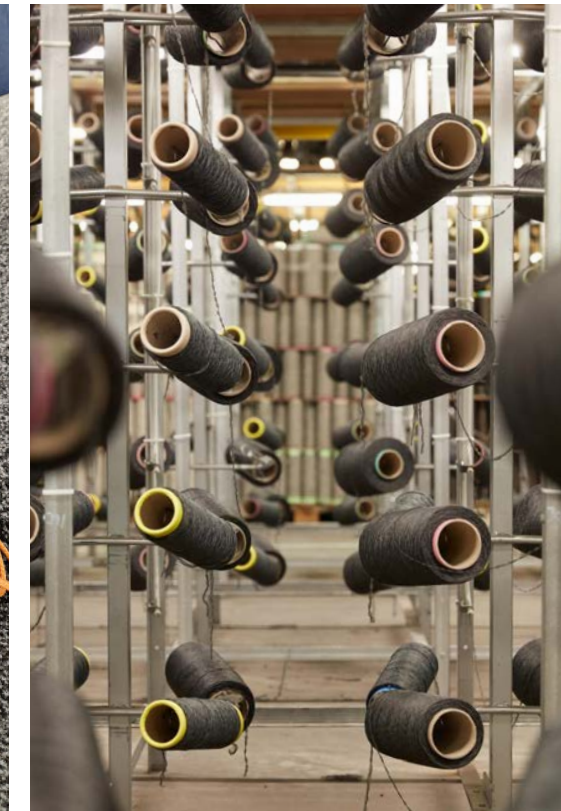
MANUFACTURERS OF CREATIVE FLOORING 

Burmatex®, created in 1967, is one of the UK's leading designers and manufacturers of contract carpet tiles. Our eco friendly portfolio focuses on the design and creation of innovative products to meet the needs of architects, specifiers and contractors. Get in touch to discuss our design service for your project.

### Research & Development



### Product & Technical Testing



### Photography & Product Launch



#### PL

Stworzona w 1967 roku marka **Burmatex®** jest jednym z czołowych brytyjskich projektantów i producentów płytek dywanowych. Nasza oferta obejmuje produkty przyjazne dla środowiska, które są projektowane i tworzone z myślą o potrzebach architektów, projektantów i wykonawców. Skontaktuj się z nami, aby dowiedzieć się więcej o naszych usługach dla Twojego projektu.

#### FR

**Burmatex®**, la marque créée en 1967, est l'un des principaux concepteurs et fabricants de dalles de moquette au Royaume-Uni. Son portefeuille écologique se concentre sur la conception et la création de produits innovants pour répondre aux besoins des architectes, des spécificateurs et des entrepreneurs. Contactez-nous pour obtenir davantage d'informations sur notre service de conception pour votre projet.

#### AR

العلامة التجارية **Burmatex®**، التي تأسست في عام 1967، هي إحدى العلامات التجارية البارزة في تصميم وتصنيع بلاط السجاد التعاقد في المملكة المتحدة. تركز مجموعتنا الصديقة للبيئة على تصميم وإنشاء منتجات مبتكرة لتلبية احتياجات المهندسين المعماريين ومحددي المواصفات والمقاولين. تواصل معنا لمناقشة خدمات التصميم الخاصة بنا لمشروعك.

# Burmatex®

MANUFACTURERS OF CREATIVE FLOORING 

eco<sub>2</sub>matters®

## Head Office

Victoria Mills, The Green  
Ossett  
West Yorkshire  
WF5 0AN  
United Kingdom

Tel: +44 (0) 1924 262525  
Email: [projects@burmatex.co.uk](mailto:projects@burmatex.co.uk)

**[www.burmatex.co.uk](http://www.burmatex.co.uk)**

Issue: November 2025