



The Place for Commercial Carpet Tiles



# Intertwine

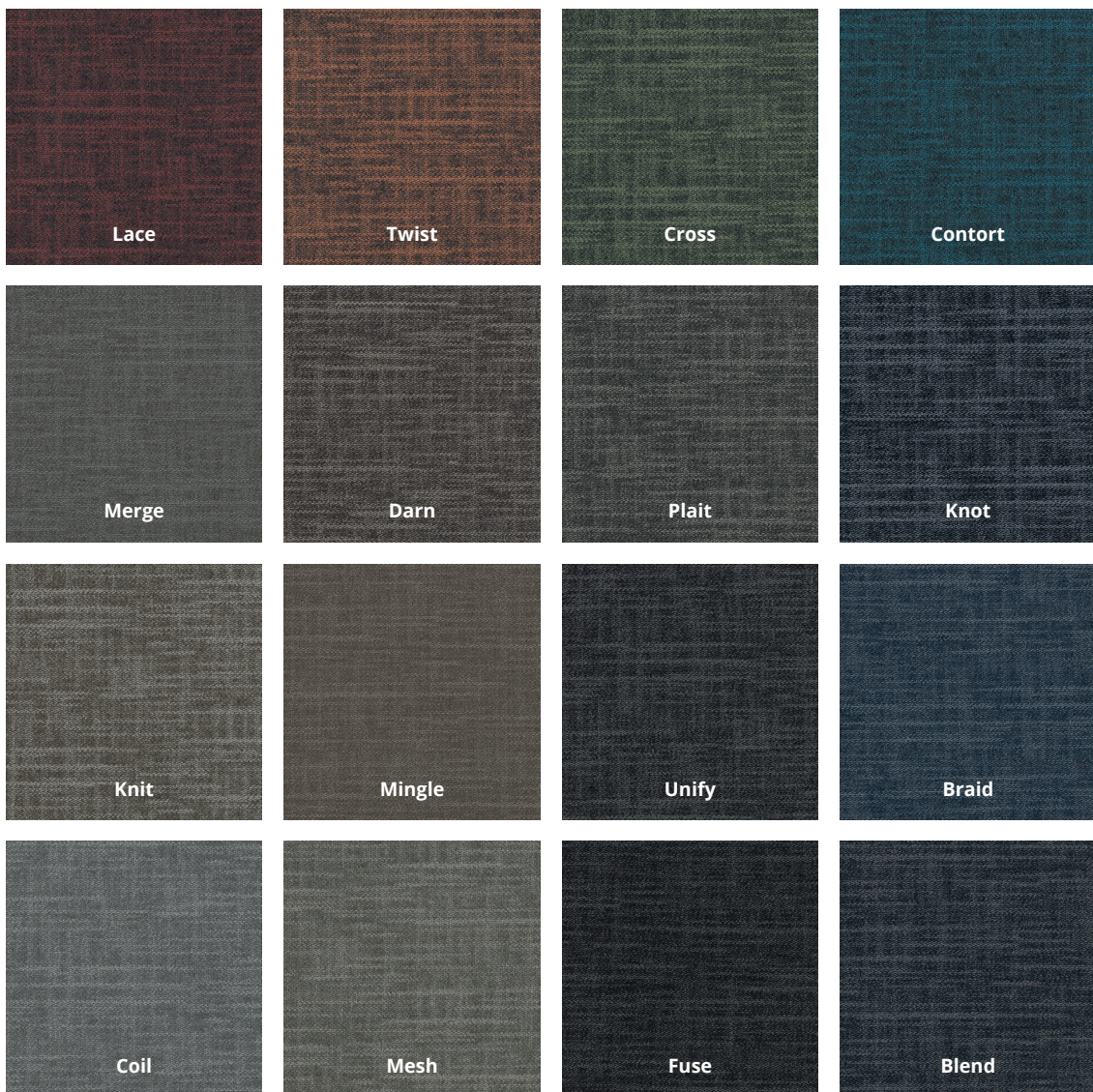
Multi-level Patterned Loop

# Intertwine

## Multi-level Patterned Loop Tile

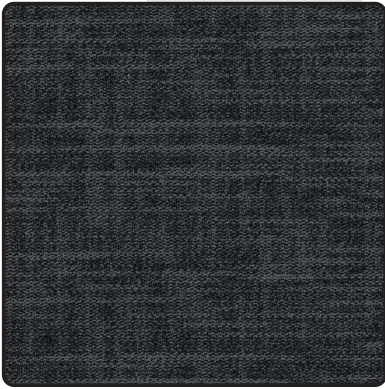
Introducing Intertwine, the latest addition to the beautiful multi-level patterned loop collection manufactured in the UK. With its stunning geometric design and availability in 16 captivating colourways, this carpet tile is crafted from solution-dyed nylon, ensuring durability and long-lasting colour.

Pairing it seamlessly with any of the 7 designs from the new wave collection to create a cohesive and stylish modular flooring solution for any workspace.

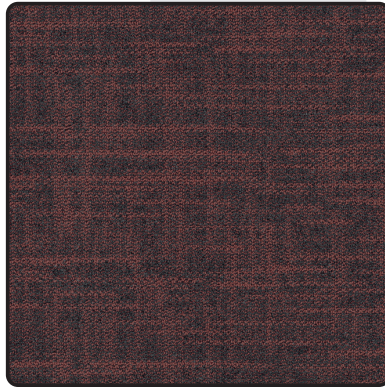




Unify



Lace



Fuse

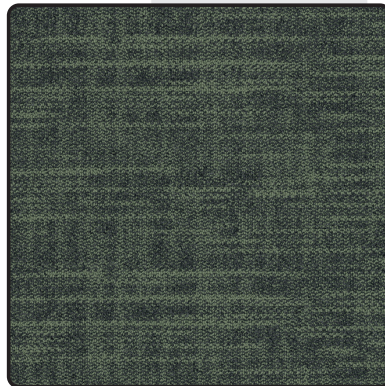




Unify



Cross

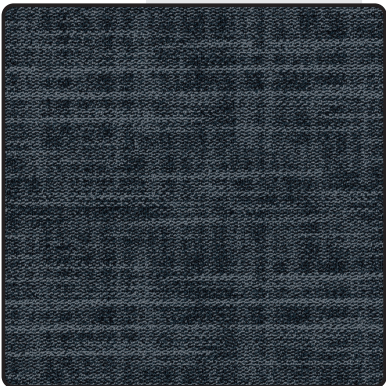


Fuse





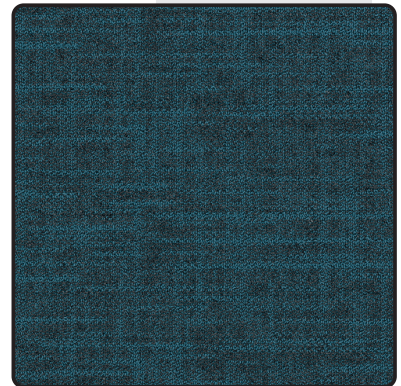
Knot



Braid

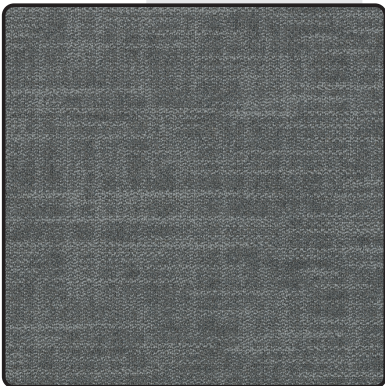


Contort

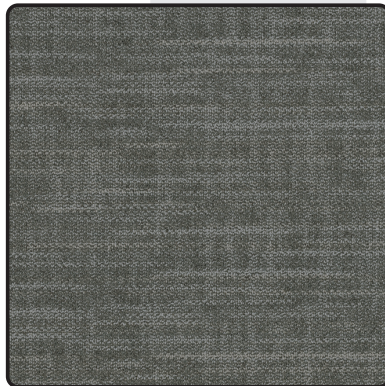




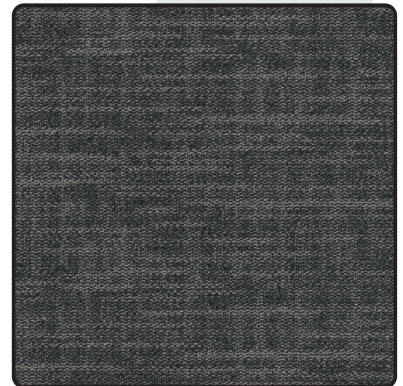
Coil



Mesh

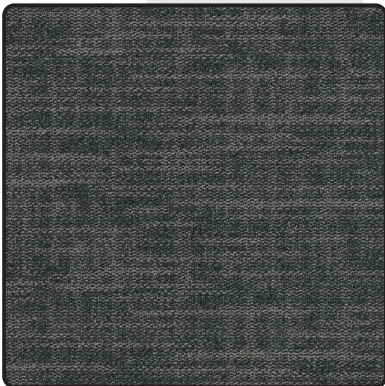


Plait





Plait



Unify



Mesh





Experience the perfect blend of style and functionality with our Cloudburst and Intertwine modular floor system. Designed to seamlessly interlock, these two collections come together to create a durable and visually appealing flooring solution for any space. With easy installation and a wide range of design options, our Cloudburst and Intertwine modular floor is the ideal choice for those looking to elevate their interior design.

Knot

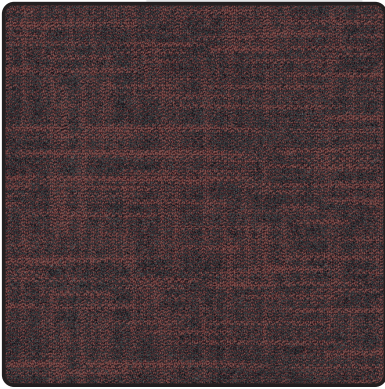


Nebula

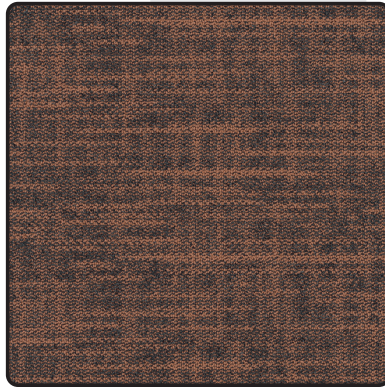




Lace



Twist



Fuse



# Installation & Cleaning

## Installation

For optimal results, a correct installation is essential, so please follow the installation instructions carefully. The floorhub carpet tiles can be installed on any subfloor that is dry, clean, grease-free, firm and stable and flat. We recommend using an anti-slip, semi-permanent tackifier. Installation guide can be found on the floorhub website: [www.thefloorhub.co.uk](http://www.thefloorhub.co.uk)

## Cleaning

Carrying out a proper maintenance programme on your carpet will not only extend the life in your carpet investment but will have a positive effect on appearance and investment of your flooring. Frequency of cleaning must be based on how much traffic goes through different areas of the building and its specific needs.

We recommend to execute a specialised maintenance plan, please visit the floorhub website for details: [www.thefloorhub.co.uk](http://www.thefloorhub.co.uk)

## LRV Ratings

Braid	7
Knot	5.4
Blend	4.5
Plait	8.2
Unify	4.3
Fuse	3
Mesh	14.4
Knit	13.3
Coil	15.5
Darn	6.9
Merge	11.2
Mingle	10
Lace	6.6
Twist	8.7
Contort	6.5
Cross	8.4

# Intertwine Specification



COMPOSITION		
Construction	ISO2424	Tufted 1/12th Loop Pile
Pile Fibre	ISO2076	100% Solution Dyed Nylon 6.0
Primary Backing	ISO2424	Non-woven Polyester
Secondary Backing	ISO2424	Polymer Modified Bitumen, plus non-woven fleece. 100% recycled calcium carbonate filler, min 75% total backing weight
Pile Height	ISO1766	2.0 mm ± 0.5mm
Total Height	ISO1765	5.3 mm ± 0.5mm
Pile Weight	ISO1958	650 gr/m <sup>2</sup> ± 5%
Total Weight	ISO8543	3800 gr/m <sup>2</sup> ± 10%
Tile Size	EN994	50 x 50 cm
Tiles per Box		20 tiles per box (5m <sup>2</sup> )

CLASSIFICATION		
Wear Resistance (Castor Chair Test)	ISO4918	Pass ≥ 2.4 (A – Continuous Use)
Fire Rating		Falls within the range of BFL
Lightfastness		≥6
Antistatic		≤ 2.0 Kv
Classification for Use	ISO10874	Class 33 Commercial Heavy
Luxury Class Rating	EN1307	LC1

ENVIRONMENTAL
Formaldehyde Emission HCHO - E1
BREEAM A+ Rating

WARRANTY
10 Year Wear Warranty

**CERTIFICATION**

**INSTALLATION**

© The Floor Hub. Specifications are subject to normal manufacturing tolerances and may be changed without prior notice. Copies of actual test results are available on request.

Please note that the colours of images displayed may vary, we recommend ordering a sample for verification before placing your order.

The Floor Hub HQ, Unit E Ventura Business Park, Colney Street, AL2 2DB  
 Tel: 01923 211151 Email: sales@thefloorhub.co.uk

[www.thefloorhub.co.uk](http://www.thefloorhub.co.uk)



The Place for Commercial Carpet Tiles