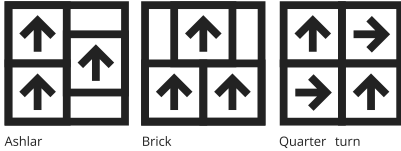


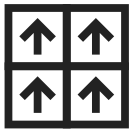
**Installation Method**



Ashlar

Brick

Quarter turn



Monolithic

All product specifications reflect averages derived from product sample testing, are subject to normal manufacturing and testing tolerances and inherent pattern variances, and may be changed without notice. For more information about these and other important attributes of the product(s) described herein, including recycled content and product warranty information, please see [www.interface.com/disclaimer](http://www.interface.com/disclaimer).

**Product** Barricade One CQuest™Bio **Colour** Brown **Collection** Barricade Collection **Backing**

**Product Specifications**

Product Construction	Tufted Patterned Textured Cut Pile
Yarn System	100% Nylon
Standard Backing	CQuest™Bio
Size	50cm x 50cm
Tiles per Box	16 - 4m <sup>2</sup>

**More Product Specifications**

Pile Yarn Weight	750 g/m <sup>2</sup> ± 5%
Total Weight	3,879 g/m <sup>2</sup> ± 5%
Pile Height	4.0 mm +15% / - 10%
Total Thickness	7.5 mm ±0.5mm
Gauge - Ends per 10 cm	1/8 - 31.5
Tufts per m <sup>2</sup>	118800 /m <sup>2</sup> ±5%

**Performance Specifications**

Wear Classification	EN 1307 32 General Contract
Castor Chair Rating	≥2.0 (EN 985) Occasional Use
Flammability	(EN ISO 9239-1: 2010) Euroclass Cfl-s1 (EN 13501-1)
Light Fastness	≥7 (ISO 105-B02)
Light Reflectance Value (LRV-L)	19.00
Light Reflectance Value (LRV-Y)	2.70
Dimensional Stability	≤0.2% (ISO 2551/EN 986)

**Environmental Specifications**

Disclosure of Product Ingredients	<a href="#">Health Product Declaration</a>
Total Recycled Content	62.7 %
Pre-Consumer (Total)	62.70 %
Total Bio Based Content	9.77 %
Total Recycled & Bio Based Content	72.47 %
Indoor Air Quality	<a href="#">Compliant with LEED EQ 5.0 credit</a> French A+ GLP 100209 M1 Emission Certification -CQB
HQE (France)	<a href="#">View Potential HQE Contribution</a>
DGNB (Germany)	<a href="#">View Potential DGNB Contribution</a>
Installation Waste	Quarter turn - 3-4% Ashlar - 3-5 % Monolithic - 3-4% Brick - 3-5 %

TacTiles® Optimised for glue-free installation with TacTiles® connectors with virtually zero VOCs

Recycling Can be returned through the Interface ReEntry scheme and be reused as raw material in new carpet tiles.

ReUse Can be cleaned and reused in a non-critical location to extend its useful life.






Waste to Energy Can be incinerated in appropriate waste to energy plant.

**Technical Information**

Installation	<a href="#">See recommended Interface installation guidelines</a>
Maintenance	<a href="#">See recommended Interface maintenance guidelines</a>
Warranty	7 years
Manufacturing Location	ISO 9001, 14001 & 45001 Certified Facilities in Europe

**Certifications**



	 <p><math>\geq 7</math></p>		 <p>0.108</p>	 <p><math>\geq 2.0</math></p>	