



Human Connections Collection

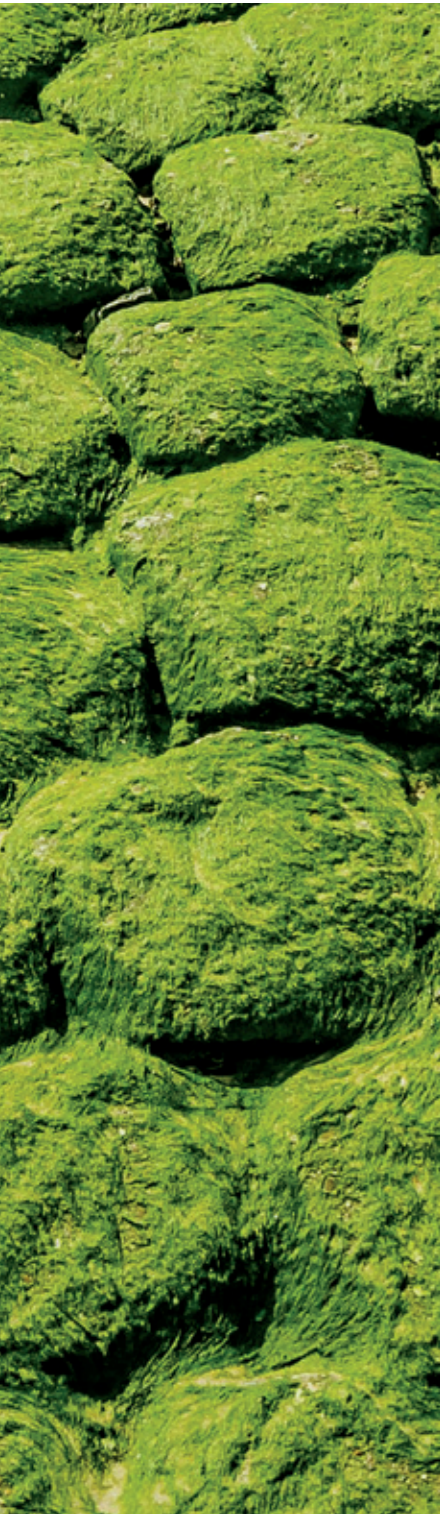
Exclusively for Interface
by David Oakey Designs

Flagstone
Kerbstone
Moss
Moss in Stone
Paver
Rue
Sett in Stone
Stone Course

Interface[®]



PRODUCT PAVER COLOUR ONYX PRODUCT SETT IN STONE COLOUR GRANITE
PRODUCT URBAN RETREAT | UR501 COLOUR GRASS INSTALLED DESIGN BY TILE



EN

Today, we are both more connected as a society and, ironically, increasingly less connected, shielded from each other and the natural world by our screens, our cars, our homes and the buildings in which we work. Human Connections literally provides the sensory and natural cues that we seek in our fast paced lives, supporting the idea that the most positive spaces offer variability and choice. Eight different styles fit together in unique ways to create paths, intersections, collision zones and destinations.

Sett in Stone, Kerbstone, Paver and Flagstone are four textures that recall the well-worn streets of the city, while Moss and Moss in Stone connect seamlessly to Sett in Stone to introduce the greenery we crave in a very organic way. The collection is completed by Rue and Stone Course. These highly patterned and colourful styles add a lively graffiti-like impact.

FR

Aujourd'hui, nous sommes davantage connectés en tant que société et, paradoxalement, de moins en moins connectés les uns aux autres et au monde naturel à cause de nos écrans, de nos voitures, de nos maisons et des bâtiments dans lesquels nous travaillons. Human Connections fournit littéralement les indices sensoriels et naturels que nous recherchons dans nos vies rythmées, soutenant l'idée que les espaces les plus positifs offrent changement et choix. Huit styles différents s'associent de manière unique pour créer des chemins, des intersections, des zones de rencontre et des destinations.

Sett in Stone, Kerbstone, Paver et Flagstone sont quatre textures qui rappellent les rues vieilles de nos villes, tandis que Moss et Moss in Stone se combine harmonieusement à Sett in Stone pour faire apparaître la verdure dont nous rêvons, d'une manière très organique. La collection est complétée par Rue et Stone Course. Ces styles aux motifs très colorés ajoutent une touche graphique.



DE

In der heutigen Zeit sind wir stärker denn je als eine Gesellschaft miteinander verbunden und gleichzeitig durch Häuser, Autos, digitale Geräte und die Gebäude, in denen wir arbeiten, voneinander und von der Natur abgeschirmt. Human Connections bietet Zugang zu den sensorischen und natürlichen Elementen, nach denen wir uns in unserem schnelllebigen Alltag sehnen, und unterstützt die Idee, dass Räume mit positiver Wirkung Variabilität und Auswahl bieten. Acht Designs fügen sich auf einzigartige Weise zusammen, um Wegeführungen zu schaffen, Bereiche abzugrenzen und zufällige Begegnungen zu fördern.

Sett in Stone, Kerbstone, Paver und Flagstone sind vier Designs, die an die gepflasterten Straßen unserer Städte erinnern, während sich Moss und Moss in Stone nahtlos mit Sett in Stone verbinden und organische Übergänge ins Grün schaffen. Die Kollektion wird von Rue und Stone Course komplettiert. Diese stark gemusterten und farbenfrohen Produkte erinnern an lebhaftes Graffiti-Designs und Mosaik-Elemente.

NL

We zijn vandaag de dag als samenleving wellicht meer verbonden, maar ironisch genoeg ook steeds minder verbonden. We worden van elkaar en van de natuur afgeschermd door beeldschermen, auto's, huizen en door de gebouwen waarin we werken. Human Connections biedt letterlijk de zintuiglijke- en natuurlijke signalen die we zoeken in onze hectische levens, en pleit voor het idee dat de meest positieve plekken zorgen voor variatie en keuze. Acht verschillende stijlen sluiten op unieke wijzen op elkaar aan voor het creëren van banen, doorgangen, collision zones en eindbestemmingen.

Sett in Stone, Kerbstone, Paver en Flagstone zijn vier texturen die doen denken aan de uitgesleten straten van de stad. Moss en Moss in Stone sluiten naadloos aan op Sett in Stone, voor het organische groen waar we zo naar hunkeren. De collectie wordt verder aangevuld met Rue en Stone Course. Deze kleurrijke stijlen met sterke patronen zorgen voor een levendig, graffiti-achtig effect.



ES

Hoy, estamos más conectados como sociedad e, irónicamente, estamos cada vez menos conectados, protegidos los unos de otros y del mundo natural por nuestras pantallas, nuestros automóviles, nuestras casas y los edificios en los que trabajamos. Human Connections proporciona literalmente las señales sensoriales y naturales que buscamos en nuestras aceleradas vidas, apoyando la idea de que los espacios más positivos ofrecen variabilidad y elección. Ocho estilos diferentes se combinan de maneras únicas para crear caminos, intersecciones, zonas de encuentro y destinos.

Sett in Stone, Kerbstone, Paver y Flagstone son cuatro texturas que recuerdan las desgastadas calles de la ciudad, mientras que Moss y Moss in Stone se conectan perfectamente con Sett in Stone para presentar la vegetación que anhelamos de una manera muy orgánica. La colección se completa con Rue y Stone Course. Estos estilos altamente estampados y coloridos agregan un animado impacto similar al graffiti.

SE

Vårt samhälle är i dag både mer, och ironiskt nog samtidigt allt mindre sammanlänkat. Vi är avskärmade från varandra och omvärlden av våra skärmar, våra bilar, våra hem och de byggnader där vi arbetar. Human Connections ger dig en känsla av naturen som annars kan saknas i ett liv med högt tempo, och vi framhåller att de mest positiva utrymna ska erbjuda variation och valmöjligheter. Vår kollektion består av åtta olika mönster som kan kombineras på unika sätt för att skapa vägar, korsningar, mötesplatser och mål.

Sett in Stone, Kerbstone, Paver och Flagstone är fyra stilar som påminner om en stads nöta gator, medan Moss och Moss in Stone på ett naturligt sätt går över i Sett in Stone för att ge en välbehövlig känsla av grönska. Kollektionen avrundas med Rue och Stone Course. Dessa starkt mönstrade och färgglada produkter ger en livlig, graffiti-liknande effekt.





PRODUCT RUE COLOURS RED, ORANGE
PRODUCT STONE COURSE COLOURS ORANGE/STONE, GREY/STONE INSTALLED DESIGN BY TILE



CARPET PRODUCT KERBSTONE COLOUR FLINT PRODUCT SETT IN STONE COLOUR FLINT
LVT PRODUCT LEVEL SET | TEXTURED STONES COLOUR COOL POLISHED CEMENT INSTALLED MONOLITHIC



PRODUCT PAVER COLOUR FLINT INSTALLED NON DIRECTIONAL
PRODUCT HUMAN NATURE | HN850 COLOUR NICKEL INSTALLED ASHLAR



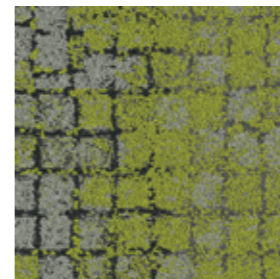
PRODUCT FLAGSTONE COLOURS FLINT & ONYX
PRODUCT SETT IN STONE COLOUR ONYX INSTALLED NON DIRECTIONAL



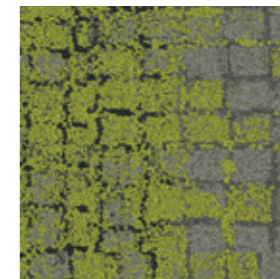
Moss Colour Range



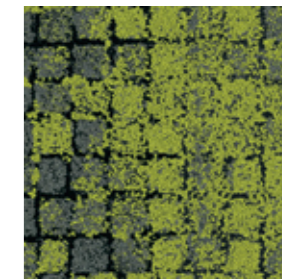
8341001 GRANITE/MOSS



8341002 SLATE/MOSS



8341003 FLINT/MOSS

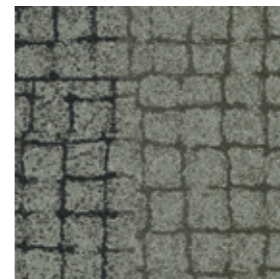


8341004 ONYX/MOSS

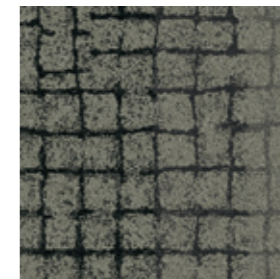
Sett in Stone Colour Range



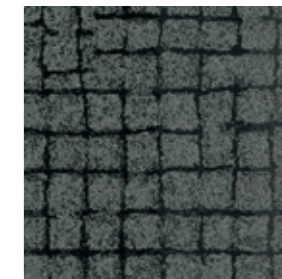
8342001 GRANITE



8342002 SLATE

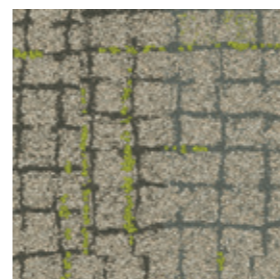


8342003 FLINT

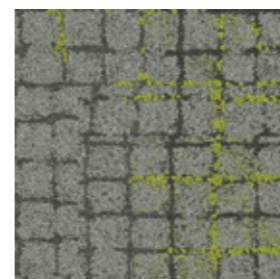


8342004 ONYX

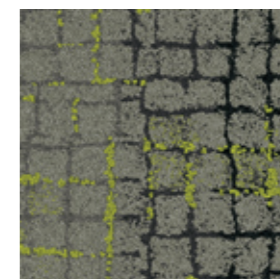
Moss in Stone Colour Range



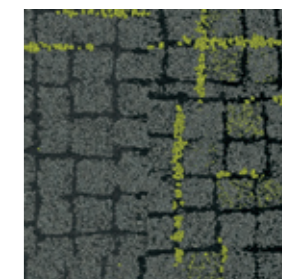
8340001 GRANITE EDGE



8340002 SLATE EDGE



8340003 FLINT EDGE

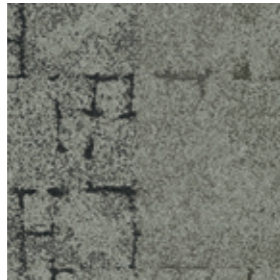


8340004 ONYX EDGE

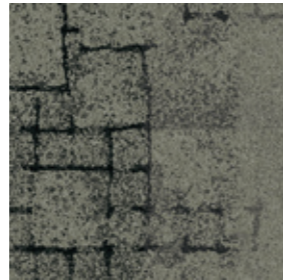
Kerbstone Colour Range



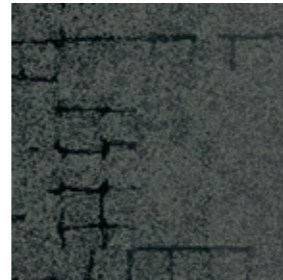
8339001 GRANITE



8339002 SLATE



8339003 FLINT

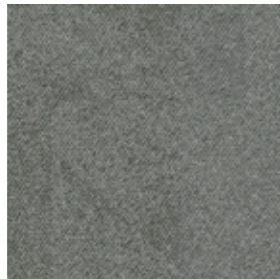


8339004 ONYX

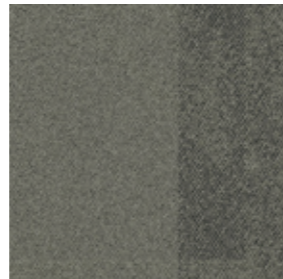
Paver Colour Range



8337001 GRANITE



8337002 SLATE



8337003 FLINT



8337004 ONYX

Flagstone Colour Range



8338001 GRANITE



8338002 SLATE



8338003 FLINT

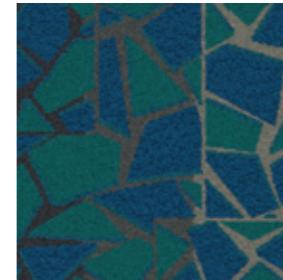


8338004 ONYX

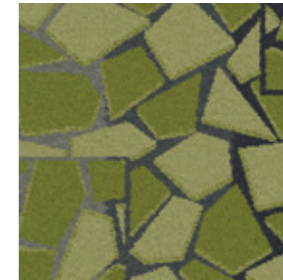
Rue Colour Range



8344001 GREY



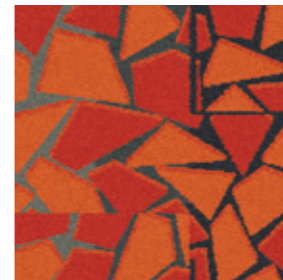
8344002 TEAL



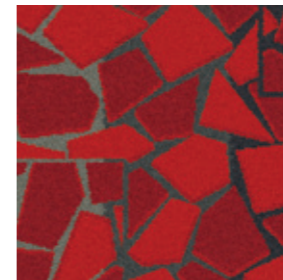
8344003 GREEN



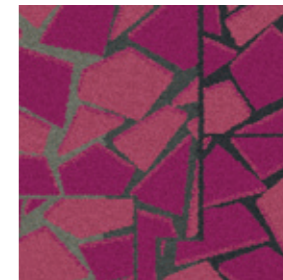
8344004 YELLOW



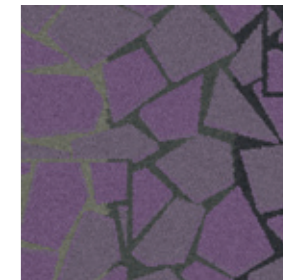
8344005 ORANGE



8344006 RED

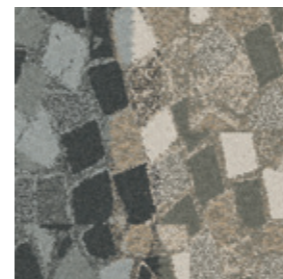


8344007 PINK

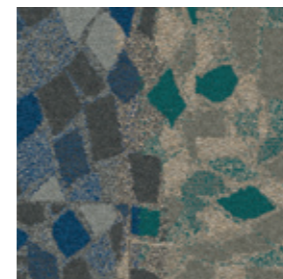


8344008 PURPLE

Stone Course Colour Range



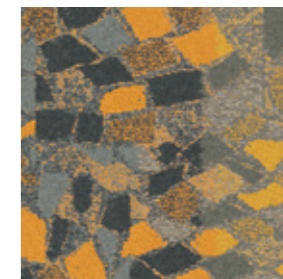
8343001 GREY/STONE



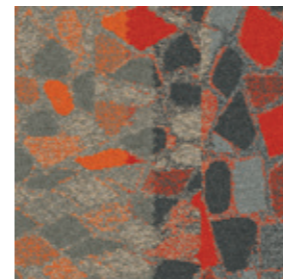
8343002 TEAL/STONE



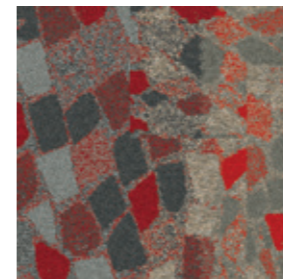
8343003 GREEN/STONE



8343004 YELLOW/STONE



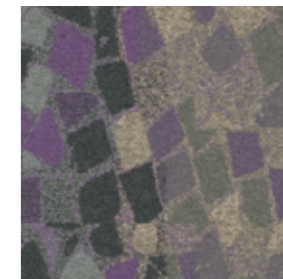
8343005 ORANGE/STONE



8343006 RED/STONE

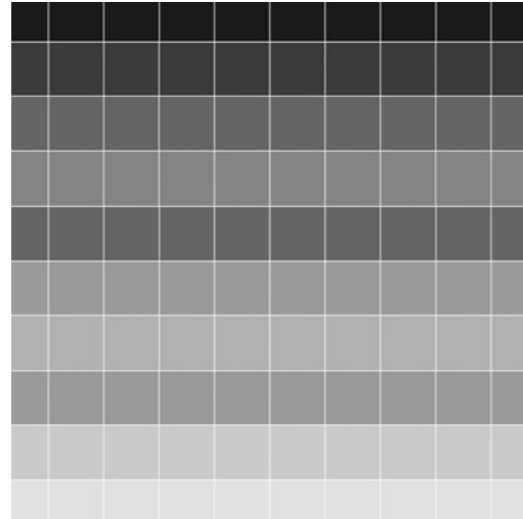


8343007 PINK/STONE

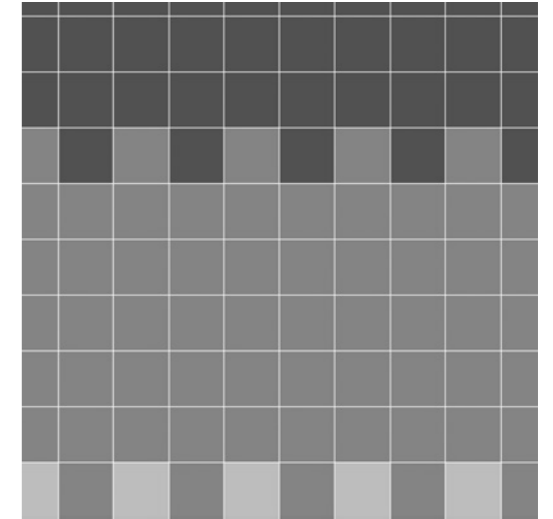


8343008 PURPLE/STONE

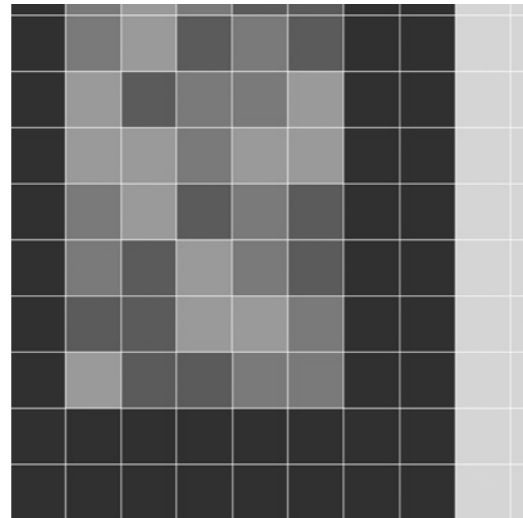
Design Ideas Below are floor layouts showing how to create the design ideas shared in several of the images featured in this brochure.



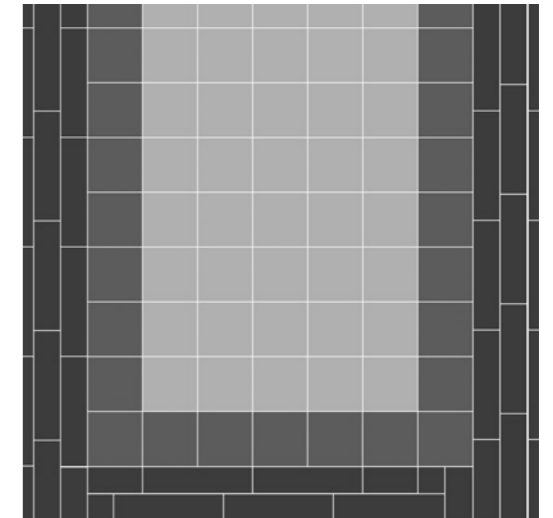
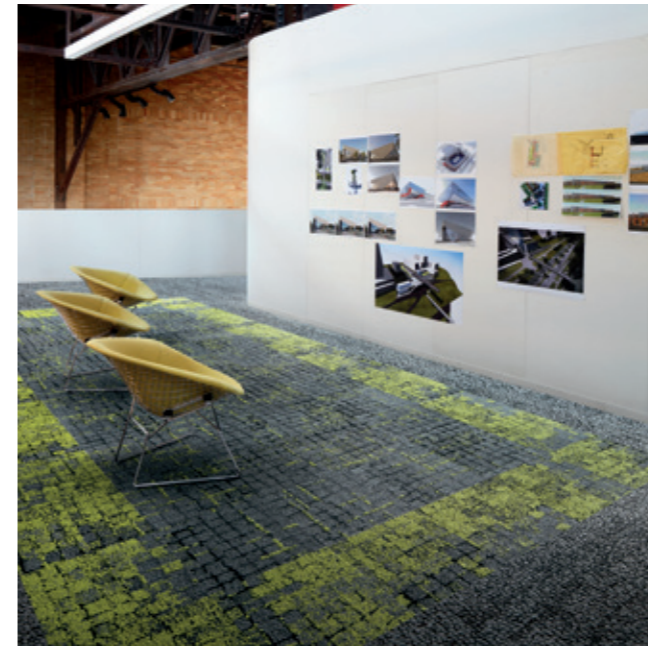
PRODUCT MOSS IN STONE **COLOURS** GRANITE EDGE, SLATE EDGE, FLINT EDGE, ONYX EDGE
PRODUCT MOSS **COLOURS** GRANITE/MOSS, SLATE/MOSS, FLINT/MOSS, ONYX/MOSS **INSTALLED** DESIGN BY TILE



PRODUCT SETT IN STONE **COLOUR** FLINT **PRODUCT** MOSS IN STONE **COLOUR** FLINT EDGE
PRODUCT MOSS **COLOUR** FLINT/MOSS **INSTALLED** DESIGN BY TILE

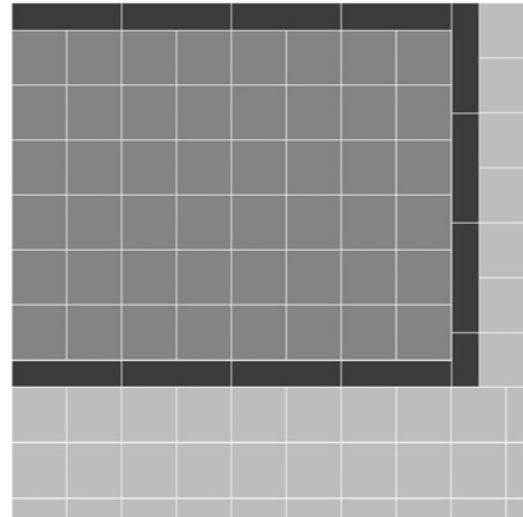


CARPET PRODUCT FLAGSTONE **COLOUR** SLATE **CARPET PRODUCT** STONE COURSE **COLOURS** TEAL/STONE, ORANGE/STONE, PURPLE/STONE
LVT PRODUCT LEVEL SET | TEXTURED STONES **COLOUR** COOL POLISHED CEMENT **INSTALLED** MONOLITHIC

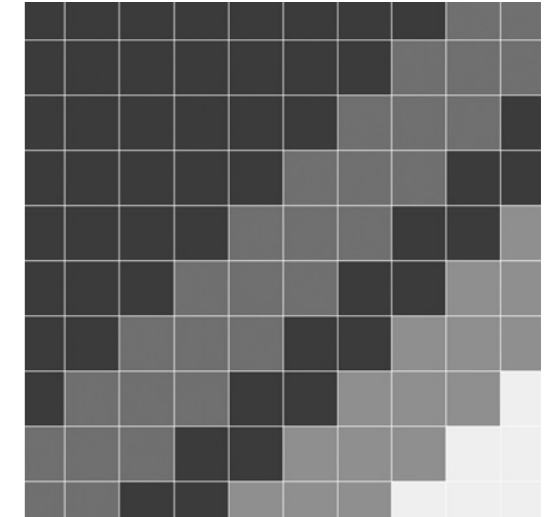


PRODUCT MOSS **COLOURS** ONYX/MOSS **PRODUCT** MOSS IN STONE **COLOUR** ONYX EDGE
PRODUCT HUMAN NATURE | HN840 **COLOUR** SLATE **INSTALLED** DESIGN BY TILE

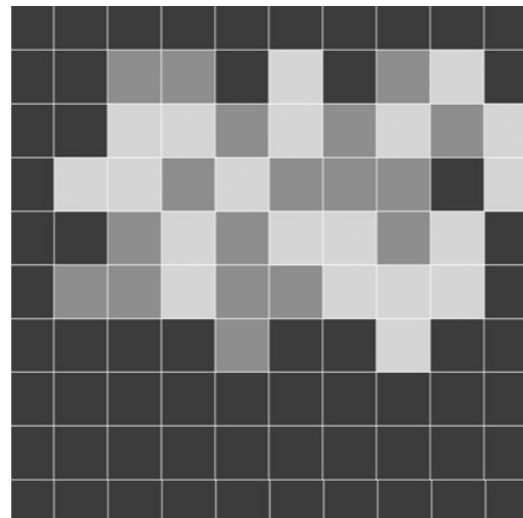
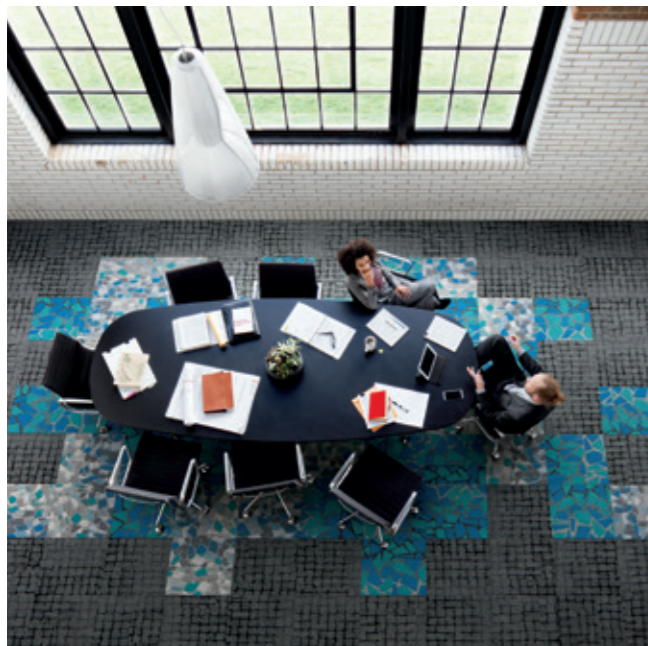
Design Ideas Below are floor layouts showing how to create the design ideas shared in several of the images featured in this brochure.



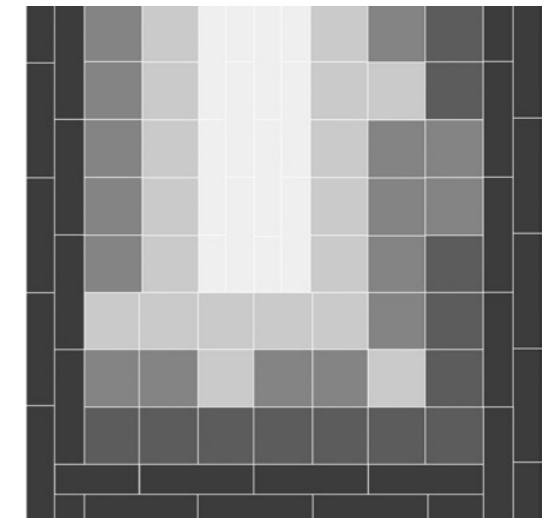
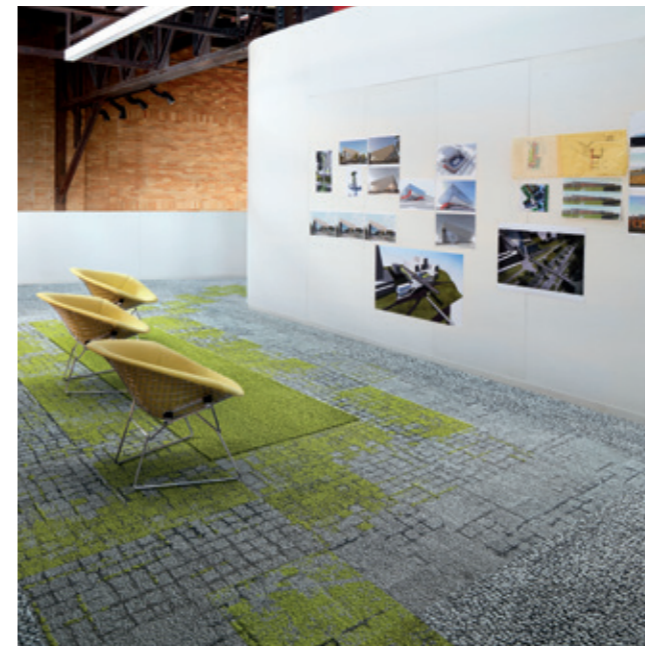
PRODUCT PAVER **COLOUR** ONYX **PRODUCT** SETT IN STONE **COLOUR** GRANITE
PRODUCT URBAN RETREAT | UR501 **COLOUR** GRASS **INSTALLED** DESIGN BY TILE



PRODUCT MOSS **COLOUR** SLATE/MOSS **PRODUCT** MOSS IN STONE **COLOUR** SLATE EDGE **PRODUCT** PAVER **COLOUR** SLATE
PRODUCT SETT IN STONE **COLOUR** SLATE **PRODUCT** KERBSTONE **COLOUR** SLATE **INSTALLATION** DESIGN BY TILE



PRODUCT SETT IN STONE **COLOUR** ONYX **PRODUCT** STONE COURSE **COLOUR** TEAL/STONE
PRODUCT RUE **COLOUR** TEAL **INSTALLED** DESIGN BY TILE



PRODUCT KERBSTONE **COLOUR** SLATE **PRODUCT** MOSS IN STONE **COLOUR** SLATE EDGE **PRODUCT** MOSS **COLOUR** SLATE/MOSS
PRODUCT HUMAN NATURE | HN830 **COLOUR** KIWI **PRODUCT** HUMAN NATURE | HN840 **COLOUR** LIMESTONE
INSTALLATION DESIGN BY TILE

Carbon Footprint / m² (Cradle to Gate)*

Moss	3.64 kg CO ₂
Sett in Stone	3.12 kg CO ₂
Moss in Stone	3.43 kg CO ₂
Kerbstone	3.12 kg CO ₂
Paver	2.80 kg CO ₂
Flagstone	3.22 kg CO ₂
Rue	3.64 kg CO ₂
Stone Course	3.64 kg CO ₂

Total Recycled and Bio-Based Content

Moss	92.7 %
Sett in Stone	92.6 %
Moss in Stone	92.5 %
Kerbstone	92.7 %
Paver	93.4 %
Flagstone	93.0 %
Rue	92.5 %
Stone Course	92.6 %

Total Virgin Content (non recycled and non bio-based)

Moss	7.3 %
Sett in Stone	7.4 %
Moss in Stone	7.5 %
Kerbstone	7.3 %
Paver	6.6 %
Flagstone	7.0 %
Rue	7.5 %
Stone Course	7.4 %

Yarn Recycled Content

	100 %
--	-------

Installation Waste

Non-Directional Installation	1-2 %
------------------------------	-------

Potential Green Building Contribution

See contributions for each at [interface.com](https://www.interface.com)

*Please see [interface.com](https://www.interface.com) for the most up to date numbers from our EPD.



PRODUCT MOSS COLOUR ONYX MOSS PRODUCT MOSS IN STONE COLOUR ONYX EDGE
PRODUCT HN840 COLOUR SLATE INSTALLED DESIGN BY TILE

Sustainability - Human Connections® Collection

Standard Backing CQuest™Bio

CQUEST™BIO
Backing

EN

CQuest™Bio is non-vinyl, non-bitumen made with a bio-composite, containing bio-based and recycled fillers. These materials, when measured on a standalone basis are net carbon negative.

DE

CQuest™Bio ist eine PVC- und bitumenfreie Rückenkonstruktion, in der biobasierte und recycelte Füllstoffe verwendet werden. Einige der darin enthaltenen Materialien sind für sich betrachtet netto CO₂-negativ und reduzieren unseren CO₂-Fußabdruck maßgeblich.

FR

CQuest™Bio est notre nouvelle sous-couche pour dalles de moquette, sans PVC et sans bitume. Elle est fabriquée avec un bio-composite, mélange de matériaux bio-sourcés et recyclés au bilan carbone net négatif.

NL

CQuest™Bio is onze nieuwe vinylvrije, niet-bitumen tapijttegelbacking gemaakt van een bio-composiet met biobased en gerecyclede vulstoffen. Deze materialen, gemeten op een stand-alone basis, zijn netto CO₂-negatief.

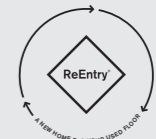
ES

CQuest™Bio no contiene vinilo ni bitumen. Está fabricado con compuestos bio y rellenos orgánicos y reciclados. Estos materiales son negativos en emisiones de carbono.

SE

CQuest™Bio är vår nya baksida för textilplattor. Den innehåller varken vinyl eller bitumen utan är tillverkad av biokomposit som innehåller biobaserade och återvunna fyllnadsmaterial. Detta gör CQuest™Bio netto koldioxidnegativ.

ReEntry®



EN

Interface promises to take back our customers used flooring product (carpet tile, LVT and Rubber) and create further value with them in the most sustainable way.

DE

Wir geben Ihnen das Versprechen, Ihre gebrauchten Interface-Bodenbeläge zurückzunehmen und damit einen Mehrwert auf nachhaltigste Art und Weise zu schaffen.

FR

Interface s'engage à reprendre les revêtements de sol usagés de ses clients et à leur donner une deuxième vie de la façon la plus éco-responsable possible.

NL

Interface belooft onze gebruikte vloerproducten van klanten terug te nemen en creëert daarmee meerwaarde in de meest duurzame manier.

ES

Interface se compromete a (moqueta modular, LVT y caucho) recuperar los pavimentos usados de nuestros clientes y crear valor a partir de ellos de la forma más sostenible.



Wear Classification

Class 33 Heavy Contract

Impact Sound Insulation ΔL_w EN ISO 10140-3

Flagstone
Kerbstone
Sett in Stone

26_{dB}

Moss
Moss in Stone
Paver
Rue
Stone Course

25_{dB}

Rating of Sound Absorption EN ISO 11654

α_w 0.20

Certifications



Technical Specifications

Moss

Product Definition	Tapestry Tufted Patterned Structured Loop Pile
Konstruktion	Tuftgemusterte strukturierte Schlingenqualität mit Web-Optik
Descripción	Moqueta modular de pelo cortado estructurado/Tapestry
Description	Dalle de moquette à velours tufté structuré à motifs (procédé Tapestry)
Type	Getufte gedessineerde gestructureerde bouclé
Descrizione	Bouclé Tufted Structured Tapestry

Pile Material	100% Recycled Solution Dyed Nylon
Polfasermaterial	100% recyceltes Polyamid garnefärbt
Composición Fibra	100% Poliamida reciclada tintada en masa
Composition	Polyamide 100% recyclé teint en masse
Poolmateriaal	100% Solution Dyed Gerecycled Polyamide
Fibra	100% Poliammide tinta in massa riciclata

Pile Yarn Weight / Poleinsatzgewicht / Peso Fibras / Poids de fibre / Poolinzetgewicht / Peso Felpa	916 g/m ² ± 5%
Total Weight / Gesamtgewicht / Peso Total / Poids total / Totaalgewicht / Peso Totale	4434 g/m ² ± 5%
Pile Height / Polschichtdicke / Altura Fibras / Hauteur de la fibre / Poolhoogte / Altezza Felpa	4.0 mm + 15% / - 10%
Total Thickness / Gesamtdicke / Espesor Total / Epaisseur totale / Totale dikte / Altezza Totale	7.9 mm ± 0.5 mm
Gauge/Ends 10 cm / Teilung x 10 cm / Galga x10 cm / Jauge-Rangs par 10 cm / Rijen per 10 cm / Serraggio x 10 cm	1/10 – 39.4
Tufts per m² / Noppenzahl/m ² / Puntadas m ² / Densité du tuft par m ² / Aantal noppen per m ² / Densità Punti	139,870 ± 5%
Backing Type / Rückenkonstruktion / Soporte / Sous-couche / Ruguitvoering / Sottofondo	CQuest™Bio
Wear Classification / Beanspruchungsklasse / Clasificación al tráfico / Classement d'usage et de confort / Gebruiksintensiteit / Resistenza all'usura	Heavy Contract (EN 1307) Class 33 / LC2

Radiant Panel /Schwerentflammbarkeit / Clasificación Al Fuego / Classement feu / De Radiant Panel Test / Valutazione delle proprietà ignifughe	(EN ISO 9239-1) Euroclass Bfl s1 (EN 13501-1)
Dimensional Stability / Dimensionsstabilität / Estabilidad Dimensional / Stabilité dimensionnelle / Dimensionele stabiliteit / Test Stabilità dimensionale	≤ 0.2% (EN 986)
Impact Sound Insulation (ΔL_w) / Trittschallverbesserungsmaß / Impacto Aislamiento Acústico / Réduction du bruit d'impact / Contactgeluid absorptie / Isolamento all'impatto acustico	25 dB (EN ISO 10140-3)
Rating of Sound Absorption / Schallabsorptionskoeffizient / Clasificación de Absorción de Sonido / Coefficient d'absorption acoustique / Waarde geluidsabsorptie / Valutazione dell'assorbimento acustico	α _w 0.20 (EN ISO 11654)
Sound Absorption / Schallabsorptionsgrad / Absorción de Sonido / Absorption acoustique / Geluidsabsorptie / Assorbimento acustico	

125Hz	250Hz	500Hz	1000Hz	2000Hz	4000Hz	(EN ISO 354)
0.02	0.03	0.09	0.27	0.45	0.57	α _s

Style	8341	3m ² - 12 tiles per box (50 x 50 cm ± 0.2%)
--------------	------	--------------------------------------------------------

DOP: 1037/127014 EN 14041:2004 Notified Body - 0493 COC 0493 – CPR – 0181 For use as floor covering in buildings	DOP: 1037/127014 EN 14041:2004 Approved Body - 8515 COC 8515 – CPR – 0181 For use as floor covering in buildings	

--	--	--	--	--	--

Sett In Stone

Product Definition	Tapestry Tufted Patterned Structured Loop Pile
Konstruktion	Tuftgemusterte strukturierte Schlingenqualität mit Web-Optik
Descripción	Moqueta modular de pelo cortado estructurado/Tapestry
Description	Dalle de moquette à velours tufté structuré à motifs (procédé Tapestry)
Type	Getufte gedessineerde gestructureerde bouclé
Descrizione	Bouclé Tufted Structured Tapestry

Pile Material	100% Recycled Solution Dyed Nylon
Polfasermaterial	100% recyceltes Polyamid garnefärbt
Composición Fibra	100% Poliamida reciclada tintada en masa
Composition	Polyamide 100% recyclé teint en masse
Poolmateriaal	100% Solution Dyed Gerecycled Polyamide
Fibra	100% Poliammide tinta in massa riciclata

Pile Yarn Weight / Poleinsatzgewicht / Peso Fibras / Poids de fibre / Poolinzetgewicht / Peso Felpa	746 g/m ² ± 5%
Total Weight / Gesamtgewicht / Peso Total / Poids total / Totaalgewicht / Peso Totale	4202 g/m ² ± 5%
Pile Height / Polschichtdicke / Altura Fibras / Hauteur de la fibre / Poolhoogte / Altezza Felpa	4.0 mm + 15% / - 10%
Total Thickness / Gesamtdicke / Espesor Total / Epaisseur totale / Totale dikte / Altezza Totale	7.0 mm ± 0.5 mm
Gauge/Ends 10 cm / Teilung x 10 cm / Galga x10 cm / Jauge-Rangs par 10 cm / Rijen per 10 cm / Serraggio x 10 cm	1/10 – 39.4
Tufts per m² / Noppenzahl/m ² / Puntadas m ² / Densité du tuft par m ² / Aantal noppen per m ² / Densità Punti	139,870 ± 5%
Backing Type / Rückenkonstruktion / Soporte / Sous-couche / Ruguitvoering / Sottofondo	CQuest™Bio
Wear Classification / Beanspruchungsklasse / Clasificación al tráfico / Classement d'usage et de confort / Gebruiksintensiteit / Resistenza all'usura	Heavy Contract (EN 1307) Class 33 / LC2

Radiant Panel /Schwerentflammbarkeit / Clasificación Al Fuego / Classement feu / De Radiant Panel Test / Valutazione delle proprietà ignifughe	(EN ISO 9239-1) Euroclass Bfl s1 (EN 13501-1)
Dimensional Stability / Dimensionsstabilität / Estabilidad Dimensional / Stabilité dimensionnelle / Dimensionele stabiliteit / Test Stabilità dimensionale	≤ 0.2% (EN 986)
Impact Sound Insulation (ΔL_w) / Trittschallverbesserungsmaß / Impacto Aislamiento Acústico / Réduction du bruit d'impact / Contactgeluid absorptie / Isolamento all'impatto acustico	26 dB (EN ISO 10140-3)
Rating of Sound Absorption / Schallabsorptionskoeffizient / Clasificación de Absorción de Sonido / Coefficient d'absorption acoustique / Waarde geluidsabsorptie / Valutazione dell'assorbimento acustico	α _w 0.20 (EN ISO 11654)
Sound Absorption / Schallabsorptionsgrad / Absorción de Sonido / Absorption acoustique / Geluidsabsorptie / Assorbimento acustico	

125Hz	250Hz	500Hz	1000Hz	2000Hz	4000Hz	(EN ISO 354)
0.04	0.05	0.09	0.22	0.45	0.58	α _s

Style	8342	4m ² - 16 tiles per box (50 x 50 cm ± 0.2%)
--------------	------	--------------------------------------------------------

DOP: 1037/126994 EN 14041:2004 Notified Body - 0493 COC 0493 – CPR – 0181 For use as floor covering in buildings	DOP: 1037/126994 EN 14041:2004 Approved Body - 8515 COC 8515 – CPR – 0181 For use as floor covering in buildings	

--	--	--	--	--	--

Moss in Stone

Product Definition	Tapestry Tufted Patterned Structured Loop Pile
Konstruktion	Tuftgemusterte strukturierte Schlingenqualität mit Web-Optik
Descripción	Moqueta modular de pelo cortado estructurado/Tapestry
Description	Dalle de moquette à velours tufté structuré à motifs (procédé Tapestry)
Type	Getufte gedessineerde gestructureerde bouclé
Descrizione	Bouclé Tufted Structured Tapestry

Pile Material	100% Recycled Solution Dyed Nylon
Polfasermaterial	100% recyceltes Polyamid garnefärbt
Composición Fibra	100% Poliamida reciclada tintada en masa
Composition	Polyamide 100% recyclé teint en masse
Poolmateriaal	100% Solution Dyed Gerecycled Polyamide
Fibra	100% Poliammide tinta in massa riciclata

Pile Yarn Weight / Poleinsatzgewicht / Peso Fibras / Poids de fibre / Poolinzetgewicht / Peso Felpa	848 g/m ² ± 5%
Total Weight / Gesamtgewicht / Peso Total / Poids total / Totaalgewicht / Peso Totale	4440 g/m ² ± 5%
Pile Height / Polschichtdicke / Altura Fibras / Hauteur de la fibre / Poolhoogte / Altezza Felpa	3.9 mm + 15% / - 10%
Total Thickness / Gesamtdicke / Espesor Total / Epaisseur totale / Totale dikte / Altezza Totale	8.0 mm ± 0.5 mm
Gauge/Ends 10 cm / Teilung x 10 cm / Galga x10 cm / Jauge-Rangs par 10 cm / Rijen per 10 cm / Serraggio x 10 cm	1/10 – 39.4
Tufts per m² / Noppenzahl/m ² / Puntadas m ² / Densité du tuft par m ² / Aantal noppen per m ² / Densità Punti	131,990 ± 5%
Backing Type / Rückenkonstruktion / Soporte / Sous-couche / Ruguitvoering / Sottofondo	CQuest™Bio
Wear Classification / Beanspruchungsklasse / Clasificación al tráfico / Classement d'usage et de confort / Gebruiksintensiteit / Resistenza all'usura	Heavy Contract (EN 1307) Class 33 / LC2

Radiant Panel /Schwerentflammbarkeit / Clasificación Al Fuego / Classement feu / De Radiant Panel Test / Valutazione delle proprietà ignifughe	(EN ISO 9239-1) Euroclass Bfl s1 (EN 13501-1)
Dimensional Stability / Dimensionsstabilität / Estabilidad Dimensional / Stabilité dimensionnelle / Dimensionele stabiliteit / Test Stabilità dimensionale	≤ 0.2% (EN 986)
Impact Sound Insulation (ΔL_w) / Trittschallverbesserungsmaß / Impacto Aislamiento Acústico / Réduction du bruit d'impact / Contactgeluid absorptie / Isolamento all'impatto acustico	25 dB (EN ISO 10140-3)
Rating of Sound Absorption / Schallabsorptionskoeffizient / Clasificación de Absorción de Sonido / Coefficient d'absorption acoustique / Waarde geluidsabsorptie / Valutazione dell'assorbimento acustico	α _w 0.20 (EN ISO 11654)
Sound Absorption / Schallabsorptionsgrad / Absorción de Sonido / Absorption acoustique / Geluidsabsorptie / Assorbimento acustico	

125Hz	250Hz	500Hz	1000Hz	2000Hz	4000Hz	(EN ISO 354)
0.02	0.03	0.09	0.27	0.45	0.57	α _s

Style	8340	3m ² - 12 tiles per box (50 x 50 cm ± 0.2%)
--------------	------	--------------------------------------------------------

DOP: 1037/127015 EN 14041:2004 Notified Body - 0493 COC 0493 – CPR – 0181 For use as floor covering in buildings	DOP: 1037/127015 EN 14041:2004 Approved Body - 8515 COC 8515 – CPR – 0181 For use as floor covering in buildings	

--	--	--	--	--	--

Kerbstone

Product Definition	Tapestry Tufted Patterned Structured Loop Pile
Konstruktion	Tuftgemusterte strukturierte Schlingenqualität mit Web-Optik
Descripción	Moqueta modular de pelo cortado estructurado/Tapestry
Description	Dalle de moquette à velours tufté structuré à motifs (procédé Tapestry)
Type	Getufte gedessineerde gestructureerde bouclé
Descrizione	Bouclé Tufted Structured Tapestry

Pile Material	100% Recycled Solution Dyed Nylon
Polfasermaterial	100% recyceltes Polyamid garnefärbt
Composición Fibra	100% Poliamida reciclada tintada en masa
Composition	Polyamide 100% recyclé teint en masse
Poolmateriaal	100% Solution Dyed Gerecycled Polyamide
Fibra	100% Poliammide tinta in massa riciclata

Pile Yarn Weight / Poleinsatzgewicht / Peso Fibras / Poids de fibre / Poolinzetgewicht / Peso Felpa	746 g/m ² ± 5%
Total Weight / Gesamtgewicht / Peso Total / Poids total / Totaalgewicht / Peso Totale	4134 g/m ² ± 5%
Pile Height / Polschichtdicke / Altura Fibras / Hauteur de la fibre / Poolhoogte / Altezza Felpa	3.5 mm + 15% / - 10%
Total Thickness / Gesamtdicke / Espesor Total / Epaisseur totale / Totale dikte / Altezza Totale	6.9 mm ± 0.5 mm
Gauge/Ends 10 cm / Teilung x 10 cm / Galga x10 cm / Jauge-Rangs par 10 cm / Rijen per 10 cm / Serraggio x 10 cm	1/10 – 39.4
Tufts per m² / Noppenzahl/m ² / Puntadas m ² / Densité du tuft par m ² / Aantal noppen per m ² / Densità Punti	139,870 ± 5%
Backing Type / Rückenkonstruktion / Soporte / Sous-couche / Ruguitvoering / Sottofondo	CQuest™Bio
Wear Classification / Beanspruchungsklasse / Clasificación al tráfico / Classement d'usage et de confort / Gebruiksintensiteit / Resistenza all'usura	Heavy Contract (EN 1307) Class 33 / LC2

Radiant Panel /Schwerentflammbarkeit / Clasificación Al Fuego / Classement feu / De Radiant Panel Test / Valutazione delle proprietà ignifughe	(EN ISO 9239-1) Euroclass Bfl s1 (EN 13501-1)
Dimensional Stability / Dimensionsstabilität / Estabilidad Dimensional / Stabilité dimensionnelle / Dimensionele stabiliteit / Test Stabilità dimensionale	≤ 0.2% (EN 986)
Impact Sound Insulation (ΔL_w) / Trittschallverbesserungsmaß / Impacto Aislamiento Acústico / Réduction du bruit d'impact / Contactgeluid absorptie / Isolamento all'impatto acustico	26 dB (EN ISO 10140-3)
Rating of Sound Absorption / Schallabsorptionskoeffizient / Clasificación de Absorción de Sonido / Coefficient d'absorption acoustique / Waarde geluidsabsorptie / Valutazione dell'assorbimento acustico	α _w 0.20 (EN ISO 11654)
Sound Absorption / Schallabsorptionsgrad / Absorción de Sonido / Absorption acoustique / Geluidsabsorptie / Assorbimento acustico	

125Hz	250Hz	500Hz	1000Hz	2000Hz	4000Hz	(EN ISO 354)
0.04	0.05	0.09	0.22	0.45	0.58	α _s

Style	8339	4m ² - 16 tiles per box (50 x 50 cm ± 0.2%)
--------------	------	--------------------------------------------------------

DOP: 1037/126995 EN 14041:2004 Notified Body - 0493 COC 0493 – CPR – 0181 For use as floor covering in buildings	DOP: 1037/126995 EN 14041:2004 Approved Body - 8515 COC 8515 – CPR – 0181 For use as floor covering in buildings	

--	--	--	--	--	--

Technical Specifications

Paver

Product Definition	Tufted Patterned Structured Loop Pile
Konstruktion	Tuftgemusterte strukturierte Schlingenqualität
Descripción	Moqueta modular tufting bucle estructurado con diseño
Description	Dalle de moquette à velours tufté bouclé structuré à motifs
Type	Getufte gedessineerde gestructureerde bouclé
Descrizione	Bouclé tufted strutturato







Pile Material	100% Recycled Solution Dyed Nylon
Polfasermaterial	100% recyceltes Polyamid garnefärbt
Composición Fibra	100% Poliamida reciclada tintada en masa
Composition	Polyamide 100% recyclé teint en masse
Poolmateriaal	100% Solution Dyed Gerecycled Polyamide
Fibra	100% Poliammide tinta in massa riciclata

Pile Yarn Weight / Poleinsatzgewicht / Peso Fibr a / Poids de fibre / Poolinzetgewicht / Peso Felpa	645 g/m ² ± 5%
Total Weight / Gesamtgewicht / Peso Total / Poids total / Totaalgewicht / Peso Totale	4093 g/m ² ± 5%
Pile Height / Polschichtdicke / Altura Fibr a / Hauteur de la fibre / Poolhoogte / Altezza Felpa	3.4 mm + 15% / - 10%
Total Thickness / Gesamtdicke / Espesor Total / Epaisseur totale / Totale dikte / Altezza Totale	6.7 mm ± 0.5 mm
Gauge/Ends 10 cm / Teilung x 10 cm / Galga x10 cm / Jauge-Rangs par 10 cm / Rijen per 10 cm / Serraggio x 10 cm	1/12 – 47.2
Tufts per m² / Noppenzahl/m ² / Puntadas m ² / Densité du tuft par m ² / Aantal noppen per m ² / Densità Punti	172,280 ± 5%
Backing Type / Rückenkonstruktion / Soporte / Sous-couche / Ruguitvoering / Sottofondo	CQuest™Bio
Wear Classification / Beanspruchungsklasse / Clasificación al tráfico / Classement d'usage et de confort / Gebruiksintensiteit / Resistenza all'usura	Heavy Contract (EN 1307) Class 33 / LC2

Radiant Panel /Schwerentflammbarkeit / Clasificación Al Fuego / Classement feu / De Radiant Panel Test / Valutazione delle proprietà ignifughe	(EN ISO 9239-1) Euroclass Cfl s1* (EN 13501-1)
Dimensional Stability / Dimensionsstabilität / Estabilidad Dimensional / Stabilité dimensionnelle / Dimensionele stabiliteit / Test Stabilità dimensionale	≤ 0.2% (EN 986)
Impact Sound Insulation (ΔL_w) / Trittschallverbesserungsmaß / Impacto Aislamiento Acústico / Réduction du bruit d'impact /Contactgeluid absorptie / Isolamento all'impatto acustico	25 dB (EN ISO 10140-3)
Rating of Sound Absorption / Schallabsorptionskoeffizient/ Clasificación de Absorción de Sonido / Coefficient d'absorption acoustique / Waarde geluidsabsorptie / Valutazione dell'assorbimento acustico	α _w 0.20 (EN ISO 11654)
Sound Absorption / Schallabsorptionsgrad / Absorción de Sonido / Absorption acoustique / Geluidsabsorptie / Assorbimento acustico	

125Hz	250Hz	500Hz	1000Hz	2000Hz	4000Hz	(EN ISO 354)
0.02	0.03	0.08	0.18	0.33	0.40	α _s

Style	8337	4m ² - 16 tiles per box (50 x 50 cm ± 0.2%)
--------------	------	--------------------------------------------------------

		
DOP: 1037/127091	DOP: 1037/127091	NON DIRECTIONAL
EN 14041:2004 Notified Body - 0493	EN 14041:2004 Approved Body - 8515	
COC 0493 – CPR – 0182	COC 8515 – CPR – 0182	
For use as floor covering in buildings	For use as floor covering in buildings	
		
≥ 2.7	≥ 2.4	

					
------------------------------------------------------------------------------------	-------------------------------------------------------------------------------------	-------------------------------------------------------------------------------------	-------------------------------------------------------------------------------------	-------------------------------------------------------------------------------------	-------------------------------------------------------------------------------------

*Bfl s1 on request / Bfl s1 auf Anfrage / Bfl s1 Bajo pedido / Bfl s1 disponible en option. Tarif et conditions sur demande / Bfl s1 Op aanvraag

Flagstone

Product Definition	Tapestry Tufted Patterned Structured Loop Pile
Konstruktion	Tuftgemusterte strukturierte Schlingenqualität mit Web-Optik
Descripción	Moqueta modular de pelo cortado estructurado/Tapestry
Description	Dalle de moquette à velours tufté structuré à motifs (procédé Tapestry)
Type	Getufte gedessineerde gestructureerde bouclé
Descrizione	Bouclé Tufted Structured Tapestry







Pile Material	100% Recycled Solution Dyed Nylon
Polfasermaterial	100% recyceltes Polyamid garnefärbt
Composición Fibra	100% Poliamida reciclada tintada en masa
Composition	Polyamide 100% recyclé teint en masse
Poolmateriaal	100% Solution Dyed Gerecycled Polyamide
Fibra	100% Poliammide tinta in massa riciclata

Pile Yarn Weight / Poleinsatzgewicht / Peso Fibr a / Poids de fibre / Poolinzetgewicht / Peso Felpa	780 g/m ² ± 5%
Total Weight / Gesamtgewicht / Peso Total / Poids total / Totaalgewicht / Peso Totale	4060 g/m ² ± 5%
Pile Height / Polschichtdicke / Altura Fibr a / Hauteur de la fibre / Poolhoogte / Altezza Felpa	3.6 mm + 15% / - 10%
Total Thickness / Gesamtdicke / Espesor Total / Epaisseur totale / Totale dikte / Altezza Totale	6.9 mm ± 0.5 mm
Gauge/Ends 10 cm / Teilung x 10 cm / Galga x10 cm / Jauge-Rangs par 10 cm / Rijen per 10 cm / Serraggio x 10 cm	1/10 – 39.4
Tufts per m² / Noppenzahl/m ² / Puntadas m ² / Densité du tuft par m ² / Aantal noppen per m ² / Densità Punti	139,870 ± 5%
Backing Type / Rückenkonstruktion / Soporte / Sous-couche / Ruguitvoering / Sottofondo	CQuest™Bio
Wear Classification / Beanspruchungsklasse / Clasificación al tráfico / Classement d'usage et de confort / Gebruiksintensiteit / Resistenza all'usura	Heavy Contract (EN 1307) Class 33 / LC2

Radiant Panel /Schwerentflammbarkeit / Clasificación Al Fuego / Classement feu / De Radiant Panel Test / Valutazione delle proprietà ignifughe	(EN ISO 9239-1) Euroclass Bfl s1 (EN 13501-1)
Dimensional Stability / Dimensionsstabilität / Estabilidad Dimensional / Stabilité dimensionnelle / Dimensionele stabiliteit / Test Stabilità dimensionale	≤ 0.2% (EN 986)
Impact Sound Insulation (ΔL_w) / Trittschallverbesserungsmaß / Impacto Aislamiento Acústico / Réduction du bruit d'impact /Contactgeluid absorptie / Isolamento all'impatto acustico	26 dB (EN ISO 10140-3)
Rating of Sound Absorption / Schallabsorptionskoeffizient/ Clasificación de Absorción de Sonido / Coefficient d'absorption acoustique / Waarde geluidsabsorptie / Valutazione dell'assorbimento acustico	α _w 0.20 (EN ISO 11654)
Sound Absorption / Schallabsorptionsgrad / Absorción de Sonido / Absorption acoustique / Geluidsabsorptie / Assorbimento acustico	

125Hz	250Hz	500Hz	1000Hz	2000Hz	4000Hz	(EN ISO 354)
0.04	0.05	0.09	0.22	0.45	0.58	α _s

Style	8338	4m ² - 16 tiles per box (50 x 50 cm ± 0.2%)
--------------	------	--------------------------------------------------------

		
DOP: 1037/126993	DOP: 1037/126993	NON DIRECTIONAL
EN 14041:2004 Notified Body - 0493	EN 14041:2004 Approved Body - 8515	
COC 0493 – CPR – 0181	COC 8515 – CPR – 0181	
For use as floor covering in buildings	For use as floor covering in buildings	
		
≥ 2.7	≥ 2.4	

					
-------------------------------------------------------------------------------------	--------------------------------------------------------------------------------------	---------------------------------------------------------------------------------------	---------------------------------------------------------------------------------------	---------------------------------------------------------------------------------------	---------------------------------------------------------------------------------------

Rue

Product Definition	Tapestry Tufted Patterned Structured Loop Pile
Konstruktion	Tuftgemusterte strukturierte Schlingenqualität mit Web-Optik
Descripción	Moqueta modular de pelo cortado estructurado/Tapestry
Description	Dalle de moquette à velours tufté structuré à motifs (procédé Tapestry)
Type	Getufte gedessineerde gestructureerde bouclé
Descrizione	Bouclé Tufted Structured Tapestry






Pile Material	100% Recycled Solution Dyed Nylon
Polfasermaterial	100% recyceltes Polyamid garnefärbt
Composición Fibra	100% Poliamida reciclada tintada en masa
Composition	Polyamide 100% recyclé teint en masse
Poolmateriaal	100% Solution Dyed Gerecycled Polyamide
Fibra	100% Poliammide tinta in massa riciclata

Pile Yarn Weight / Poleinsatzgewicht / Peso Fibr a / Poids de fibre / Poolinzetgewicht / Peso Felpa	916 g/m ² ± 5%
Total Weight / Gesamtgewicht / Peso Total / Poids total / Totaalgewicht / Peso Totale	4635 g/m ² ± 5%
Pile Height / Polschichtdicke / Altura Fibr a / Hauteur de la fibre / Poolhoogte / Altezza Felpa	4.5 mm + 15% / - 10%
Total Thickness / Gesamtdicke / Espesor Total / Epaisseur totale / Totale dikte / Altezza Totale	8.3 mm ± 0.5 mm
Gauge/Ends 10 cm / Teilung x 10 cm / Galga x10 cm / Jauge-Rangs par 10 cm / Rijen per 10 cm / Serraggio x 10 cm	1/10 – 39.4
Tufts per m² / Noppenzahl/m ² / Puntadas m ² / Densité du tuft par m ² / Aantal noppen per m ² / Densità Punti	126,080 ± 5%
Backing Type / Rückenkonstruktion / Soporte / Sous-couche / Ruguitvoering / Sottofondo	CQuest™Bio
Wear Classification / Beanspruchungsklasse / Clasificación al tráfico / Classement d'usage et de confort / Gebruiksintensiteit / Resistenza all'usura	Heavy Contract (EN 1307) Class 33 / LC2

Radiant Panel /Schwerentflammbarkeit / Clasificación Al Fuego / Classement feu / De Radiant Panel Test / Valutazione delle proprietà ignifughe	(EN ISO 9239-1) Euroclass Bfl s1 (EN 13501-1)
Dimensional Stability / Dimensionsstabilität / Estabilidad Dimensional / Stabilité dimensionnelle / Dimensionele stabiliteit / Test Stabilità dimensionale	≤ 0.2% (EN 986)
Impact Sound Insulation (ΔL_w) / Trittschallverbesserungsmaß / Impacto Aislamiento Acústico / Réduction du bruit d'impact /Contactgeluid absorptie / Isolamento all'impatto acustico	25 dB (EN ISO 10140-3)
Rating of Sound Absorption / Schallabsorptionskoeffizient/ Clasificación de Absorción de Sonido / Coefficient d'absorption acoustique / Waarde geluidsabsorptie / Valutazione dell'assorbimento acustico	α _w 0.20 (EN ISO 11654)
Sound Absorption / Schallabsorptionsgrad / Absorción de Sonido / Absorption acoustique / Geluidsabsorptie / Assorbimento acustico	

125Hz	250Hz	500Hz	1000Hz	2000Hz	4000Hz	(EN ISO 354)
0.02	0.03	0.09	0.27	0.45	0.57	α _s

Style	8344	4m ² - 16 tiles per box (50 x 50 cm ± 0.2%)
--------------	------	--------------------------------------------------------

		
DOP: 1037/127042	DOP: 1037/127042	NON DIRECTIONAL
EN 14041:2004 Notified Body - 0493	EN 14041:2004 Approved Body - 8515	
COC 0493 – CPR – 0181	COC 8515 – CPR – 0181	
For use as floor covering in buildings	For use as floor covering in buildings	
		
≥ 2.7	≥ 2.4	

					
---------------------------------------------------------------------------------------	---------------------------------------------------------------------------------------	---------------------------------------------------------------------------------------	---------------------------------------------------------------------------------------	---------------------------------------------------------------------------------------	---------------------------------------------------------------------------------------

Stone Course

Product Definition	Tapestry Tufted Patterned Structured Loop Pile
Konstruktion	Tuftgemusterte strukturierte Schlingenqualität mit Web-Optik
Descripción	Moqueta modular de pelo cortado estructurado/Tapestry
Description	Dalle de moquette à velours tufté structuré à motifs (procédé Tapestry)
Type	Getufte gedessineerde gestructureerde bouclé
Descrizione	Bouclé Tufted Structured Tapestry







Pile Material	100% Recycled Solution Dyed Nylon
Polfasermaterial	100% recyceltes Polyamid garnefärbt
Composición Fibra	100% Poliamida reciclada tintada en masa
Composition	Polyamide 100% recyclé teint en masse
Poolmateriaal	100% Solution Dyed Gerecycled Polyamide
Fibra	100% Poliammide tinta in massa riciclata

Pile Yarn Weight / Poleinsatzgewicht / Peso Fibr a / Poids de fibre / Poolinzetgewicht / Peso Felpa	916 g/m ² ± 5%
Total Weight / Gesamtgewicht / Peso Total / Poids total / Totaalgewicht / Peso Totale	4555 g/m ² ± 5%
Pile Height / Polschichtdicke / Altura Fibr a / Hauteur de la fibre / Poolhoogte / Altezza Felpa	3.7 mm + 15% / - 10%
Total Thickness / Gesamtdicke / Espesor Total / Epaisseur totale / Totale dikte / Altezza Totale	7.9 mm ± 0.5 mm
Gauge/Ends 10 cm / Teilung x 10 cm / Galga x10 cm / Jauge-Rangs par 10 cm / Rijen per 10 cm / Serraggio x 10 cm	1/10 – 39.4
Tufts per m² / Noppenzahl/m ² / Puntadas m ² / Densité du tuft par m ² / Aantal noppen per m ² / Densità Punti	131,990 ± 5%
Backing Type / Rückenkonstruktion / Soporte / Sous-couche / Ruguitvoering / Sottofondo	CQuest™Bio
Wear Classification / Beanspruchungsklasse / Clasificación al tráfico / Classement d'usage et de confort / Gebruiksintensiteit / Resistenza all'usura	Heavy Contract (EN 1307) Class 33 / LC2

Radiant Panel /Schwerentflammbarkeit / Clasificación Al Fuego / Classement feu / De Radiant Panel Test / Valutazione delle proprietà ignifughe	(EN ISO 9239-1) Euroclass Bfl s1 (EN 13501-1)
Dimensional Stability / Dimensionsstabilität / Estabilidad Dimensional / Stabilité dimensionnelle / Dimensionele stabiliteit / Test Stabilità dimensionale	≤ 0.2% (EN 986)
Impact Sound Insulation (ΔL_w) / Trittschallverbesserungsmaß / Impacto Aislamiento Acústico / Réduction du bruit d'impact /Contactgeluid absorptie / Isolamento all'impatto acustico	25 dB (EN ISO 10140-3)
Rating of Sound Absorption / Schallabsorptionskoeffizient/ Clasificación de Absorción de Sonido / Coefficient d'absorption acoustique / Waarde geluidsabsorptie / Valutazione dell'assorbimento acustico	α _w 0.20 (EN ISO 11654)
Sound Absorption / Schallabsorptionsgrad / Absorción de Sonido / Absorption acoustique / Geluidsabsorptie / Assorbimento acustico	

125Hz	250Hz	500Hz	1000Hz	2000Hz	4000Hz	(EN ISO 354)
0.02	0.03	0.09	0.27	0.45	0.57	α _s

Style	8343	4m ² - 16 tiles per box (50 x 50 cm ± 0.2%)
--------------	------	--------------------------------------------------------

		
DOP: 1037/127043	DOP: 1037/127043	NON DIRECTIONAL
EN 14041:2004 Notified Body - 0493	EN 14041:2004 Approved Body - 8515	
COC 0493 – CPR – 0181	COC 8515 – CPR – 0181	
For use as floor covering in buildings	For use as floor covering in buildings	
		
≥ 2.7	≥ 2.4	

					
---------------------------------------------------------------------------------------	---------------------------------------------------------------------------------------	---------------------------------------------------------------------------------------	---------------------------------------------------------------------------------------	---------------------------------------------------------------------------------------	---------------------------------------------------------------------------------------

Light Values

Product	Colour No	Colour Name	L Value*	Y Value*
Moss	8341001	Granite/Moss	48.4	17.1
	8341002	Slate/Moss	47.4	16.4
	8341003	Flint/Moss	46.5	15.6
	8341004	Onyx/Moss	42.7	13.0
Sett in Stone	8342001	Granite	51.6	19.8
	8342002	Slate	45.4	14.8
	8342003	Flint	39.7	11.1
	8342004	Onyx	33.3	7.7
Moss in Stone	8340001	Granite Edge	51.0	19.3
	8340002	Slate Edge	46.6	15.8
	8340003	Flint Edge	40.6	11.6
	8340004	Onyx Edge	35.5	8.7
Kerbstone	8339001	Granite	50.7	19.0
	8339002	Slate	46.3	15.5
	8339003	Flint	40.7	11.7
	8339004	Onyx	33.8	7.9
Paver	8337001	Granite	49.3	17.8
	8337002	Slate	46.8	15.8
	8337003	Flint	39.8	11.2
	8337004	Onyx	33.3	7.7
Flagstone	8338001	Granite	24.4	5.4
	8338002	Slate	47.6	16.5
	8338003	Flint	42.4	12.7
	8338004	Onyx	35.1	8.5
Rue	8344001	Grey	55.7	23.6
	8344002	Teal	35.4	8.7
	8344003	Green	48.5	17.2
	8344004	Yellow	58.4	26.4
	8344005	Orange	42.8	13.0
	8344006	Red	35.9	9.0
	8344007	Pink	37.1	9.6
	8344008	Purple	40.1	11.3
Stone Course	8343001	Grey/Stone	55.0	22.9
	8343002	Teal/Stone	43.2	13.3
	8343003	Green/Stone	51.5	19.7
	8343004	Yellow/Stone	50.9	19.2
	8343005	Orange/Stone	46.8	15.9
	8343006	Red/Stone	45.3	14.7
	8343007	Pink/Stone	42.7	13.0
	8343008	Purple/Stone	44.4	14.2

* **Light Value:** L Value = L according to CIE L*a*b* colour space, Y Value = Light Reflectance Value according to BS 8493

Lichtreflexionswerte: L-Wert = L gemäß CIE L*a*b* Farbspektrum, Y-Wert = Lichtreflexionswert gemäß British Standard BS 8493

Valores de Reflectancia de Luz: Valor L = L según CIE L*a*b* espacio de color, Valor Y = Valor de reflectancia de luz según el estándar británico BS 8493

Valeurs concernant la lumière: Valeur L = L faisant référence à la méthode CIE L*a*b* pour la couleur, Valeur Y = Valeurs de réflectance de la lumière selon le British Standard BS 8493

Licht waarden: L Waarde = L volgens CIE L*a*b*kleurruimte, Y Waarde = Licht Reflectie Waarde volgens BS 8493

Indici di riflettanza alla luce: Indice L = L secondo CIE L*a*b* colour space, Indice Y = Indice di riflettanza alla luce secondo la norma BS 8493

EN Interface European Manufacturing BV reserves the right to change or modify specifications. Please see website for latest specifications. We have tried our very best to accurately represent product colours. However, due to the nature of printed materials, colour of actual products may vary slightly. Please request a sample to see actual product colour.

DE Interface European Manufacturing BV behält sich das Recht vor, Produktspezifikationen zu ändern oder entsprechend anzupassen. Die aktuellsten technischen Spezifikationen finden Sie auf unserer Website. Wir versuchen die Farben so naturgetreu wie möglich wiederzugeben. Farbabweichungen lassen sich jedoch nicht ausschließen. Bitte fordern Sie ein Muster an, um sich von der tatsächlichen Farbe zu überzeugen.

ES Interface European Manufacturing BV se reserva el derecho a modificar las especificaciones arriba referenciadas. Por favor, consulta nuestra web para ver las últimas especificaciones. Hemos intentado representar con la máxima precisión posible los Colores del producto. Sin embargo, debido a la naturaleza de los materiales impresos, el Color de los productos reales puede variar ligeramente. Por favor, solicita una muestra para ver el Colour real del producto.

FR Interface European Manufacturing BV se réserve la possibilité de modifier les caractéristiques ci-dessus. Les caractéristiques techniques à jour sont consultables sur le site internet. Les couleurs présentées se rapprochent au maximum des Coloris réels. Toutefois, les procédés d'impression des matériaux peuvent entraîner une légère variation du Coloris. Merci de demander un échantillon pour constater la couleur des produits.

NL Interface European Manufacturing BV behoudt zich het recht voor de specificaties te allen tijde aan te passen. Zie de website voor de nieuwste specificaties. Wij hebben getracht de productkleuren zo goed mogelijk te reproduceren. De kleuren van geprint materiaal kunnen echter altijd enigszins afwijken. Vraag altijd stalenmateriaal aan om de daadwerkelijke kleur te beoordelen.

SE Vi har gjort vårt bästa för att representera korrekta produktfärger. Emellertid, på grund av typen av tryckt material, kan färgen på faktiska produkter variera något. Beställ gärna ett prov för att se aktuell produktfärg.

Europe, Middle East & Africa

AE	+971 44508175
AT	+43 1 8102839
BA	+387 33 522 534
BE	+32 2 475 27 27
BG	+359 2 808 303
BY	+375 17 226 75 14
CH	+41 44 913 68 00
CZ	+42 0 233 087 111
DE	+49 2151 3718 0
DK	+45 33 79 70 55
EE	+372 6518 313
ES	+34 932 418 750
EG	+(202) 3760 7818
FR	+33 1 58 10 20 20
GR	+30 211 2120820
HR	+385 14 62 30 63
HU	+36 1 349 6545
IE	+353 1 679 8466
IL	+972 97403034
IT	+39 02 890 93678
KZ	+7 701 391 88 13
LT	+370 37 337332
LV	+371 672 18 744
NL	+31 33 277 5555
ME	+381 11 414 92 00
MK	+389 2 323 01 89
NO	+47 23 12 01 70
PL	+48 22 862 48 40
PT	+351 217 122 740
RO	+40 21 317 12 40/42/43/44
RS	+381 11 414 92 00
SA	+966 554622263
SE	+468 241 230
SK	+421 911 104 073
SI	+386 8 205 4007
TR	+ 90 212 248 97 77
UA	+38(044)238 27 67
UK	+44 (0)800 3134465
ZA	+27 11 608 4270