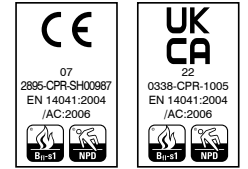
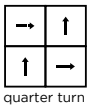
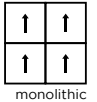


## technical specifications

Yarn	100% <b>Econyl<sup>®</sup> regenerated recyclable</b> solution dyed nylon
Dimensions	50cm x 50cm
Pile Weight	1300g/m <sup>2</sup>
Total Weight	4550g/m <sup>2</sup>
Pile Height	7.0mm
Total Thickness	9.5mm
Construction	Tufted 1/10th gauge cut pile twist
Pile Density	165,354/m <sup>2</sup>
Backing	<b>BioBase<sup>®</sup> recycled</b> backing (recycled BS EN ISO 14021)
Wear Classification	Class 33 heavy commercial use (BS EN 1307)
Luxury Rating Class	LC5
Flammability	Euroclass Bfl-s1
Thermal Resistance	Tog Rating 0.93
Castor Chair Rating	BS EN 985 Pass - suitable for continuous use
Hexapod	BS ISO 10361: Method B:2000 3 to 4
Static Loading	BS 4939: 1987 (2003) Recovery >80% (24hrs)
Dynamic Loading	BS ISO 2094: 1999 (2005) Loss <20% (1000 impacts)
Body Voltage Test	BS ISO 6356:2000 <2kV
Colour Fastness To Light	BS EN ISO 105 - B02 Minimum Grade 6
Colour Fastness To Shampoo	BS 1006:UK-TB: 1990 Minimum Grade 4-5
Sound Absorption Coefficient	BS EN 354:2003
Reduction in Impact Noise	BS EN ISO 10140-3:2010 28dB
Reduction in Impact Noise at 1000Hz	BS EN ISO 10140-3:2010 47.0dB
VOC	A+
Warranty	15 years
Number Of Tiles Per Box	14 (3.5m <sup>2</sup> )



## eco<sub>2</sub>matters<sup>®</sup>

We are committed to helping deliver a sustainable future, because we believe that what we do **matters**. To help us deliver on this commitment, we have developed **eco<sub>2</sub>matters<sup>®</sup>**, our sustainability principles, supported by independent 3rd party verification.



Made from 100% **Econyl<sup>®</sup> regenerated recyclable** solution dyed nylon yarn and our unique **BioBase<sup>®</sup> recycled** backing, **origin** is **low carbon**. The commercial colour palette of 10 is sophisticated and refined, inspired by coastal walks and views. This cut pile range works both as a stand-alone product, and with others from our product portfolio, to enhance any commercial setting.

<p><b>origin</b> is <b>low carbon</b></p>	<p><b>Burmatex<sup>®</sup> reco<sub>2</sub>very</b> take back service provides a no landfill solution for your used tiles</p>
<p><b>origin</b> is made from 100% <b>Econyl<sup>®</sup> regenerated recyclable</b> yarn</p>	<p><b>Burmatex<sup>®</sup></b> products are made using 100% certified <b>renewable</b> electricity</p>
<p><b>origin</b> uses <b>BioBase<sup>®</sup> recycled</b> backing</p>	<p><b>eco<sub>2</sub>matters<sup>®</sup></b> declarations are independently 3rd party verified</p>
<p><b>EPD</b> <b>Burmatex<sup>®</sup></b> products are supported by 3rd party independently verified, product specific EPD's</p>	<p><b>LEED</b> <b>Burmatex<sup>®</sup></b> products contribute towards Leed accreditation</p>
<p><b>SKA</b> <b>Burmatex<sup>®</sup></b> products adhere to SKA standards</p>	<p><b>WELL Building Standards</b> <b>Burmatex<sup>®</sup></b> products contribute to WELL Building Standards</p>



**BIM** need a BIM object?  
all our products have BIM objects available on our website

need samples? scan the QR code visit [www.burmatex.co.uk](http://www.burmatex.co.uk) call +44 (0) 1924 262525 email [samples@burmatex.co.uk](mailto:samples@burmatex.co.uk)



contact us  
T +44 (0) 1924 262 525  
email: [sales@burmatex.co.uk](mailto:sales@burmatex.co.uk)

Burmatex Ltd  
Victoria Mills, The Green  
Ossett, West Yorkshire  
WF5 0AN, United Kingdom

[www.burmatex.co.uk](http://www.burmatex.co.uk)

## LRV values

Product code	Product colour name	CIE Y
33201	cloud	20.75
33202	pearl	18.49
33203	pebble	10.58
33204	shale	7.67
33205	mussel	5.24
33206	gull	2.57
33207	gorse	12.86
33208	surf	6.82
33209	wave	2.10
33210	heather	4.16